

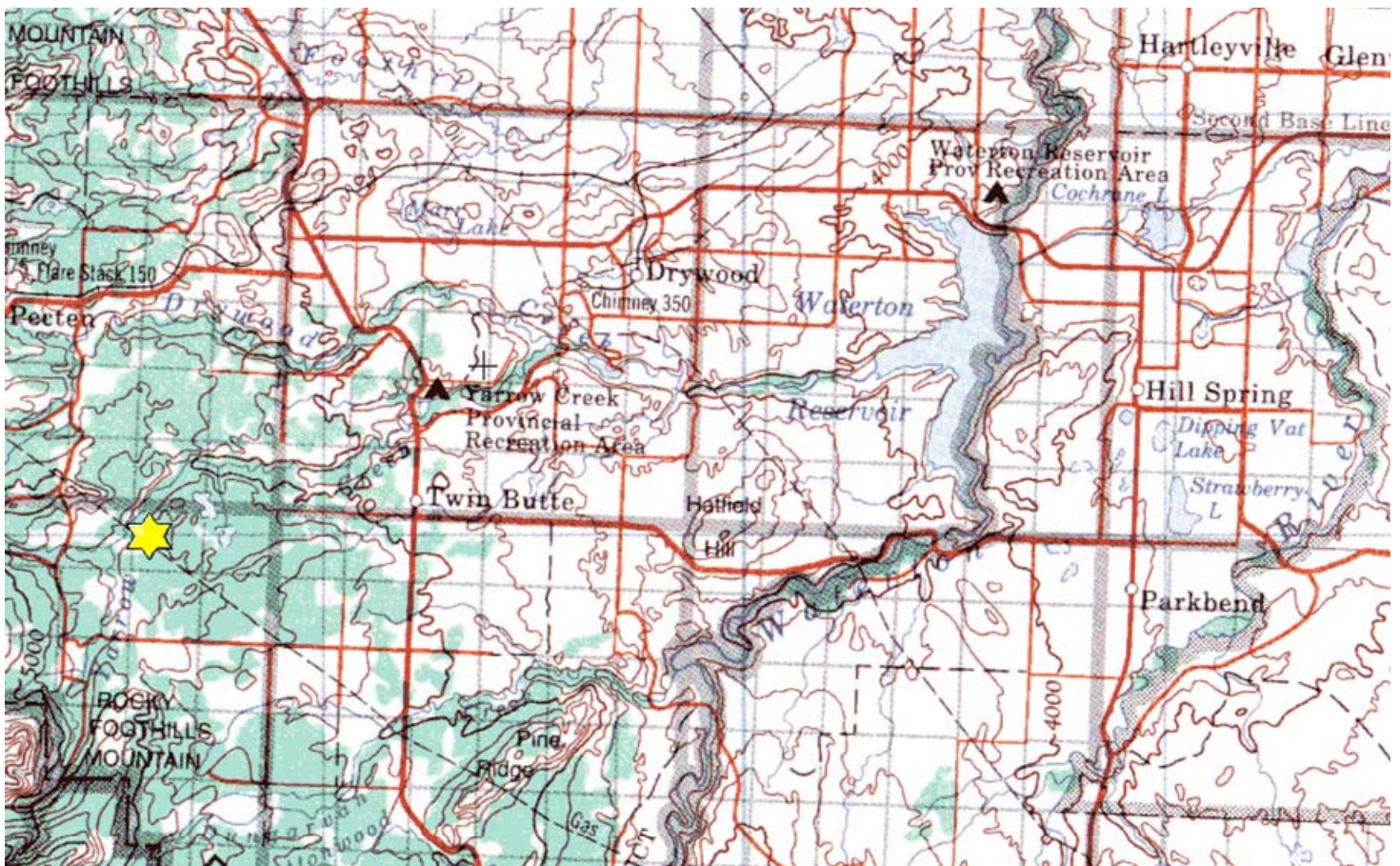


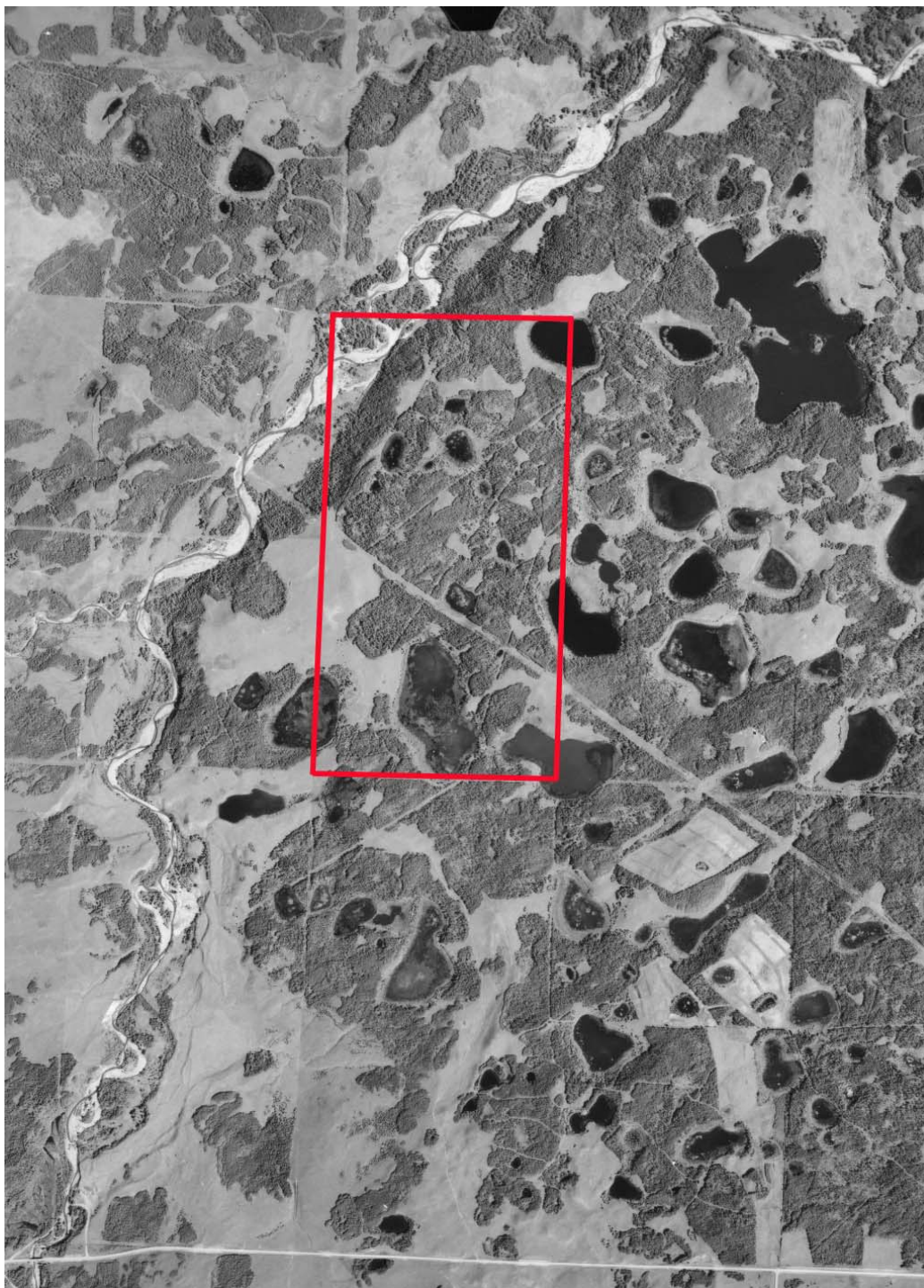
Island Lakes Property W35-3-30-W4M

Description: The Island Lakes is found west of Twin Butte and consists of 288.4 acres. The property has many water bodies distributed throughout it, as well as a short stretch of Yarrow Creek. Trembling aspen covers much of the property, with cottonwoods found along the creek. Grasslands are interspersed throughout the property with the remnants of an old farmstead found in the southwest corner. A large diversity of wildlife can be found on the property. This includes grizzly bear, elk, moose, white-tailed deer, coyote, fox, Columbian ground squirrels, trumpeter swans, beaver, mink, fisher, weasel, and a large variety of bird species. Opportunities exist to hunt upland game birds, waterfowl and big game on the property during legal hunting seasons.

Partners: Ducks Unlimited. Nature Conservancy of Canada

Special Restrictions: Day use only. No open fires. Foot access only. Permission is required to cross adjacent land to access the Island Lakes Property. Please Use Respect





Alberta Fish & Game Association, 6924 - 104street, Edmonton Alberta, T6H 2L7
Phone: 780-437-2342, Fax: 780-438-6872
Email: Office@afga.org
Website: www.afga.org