



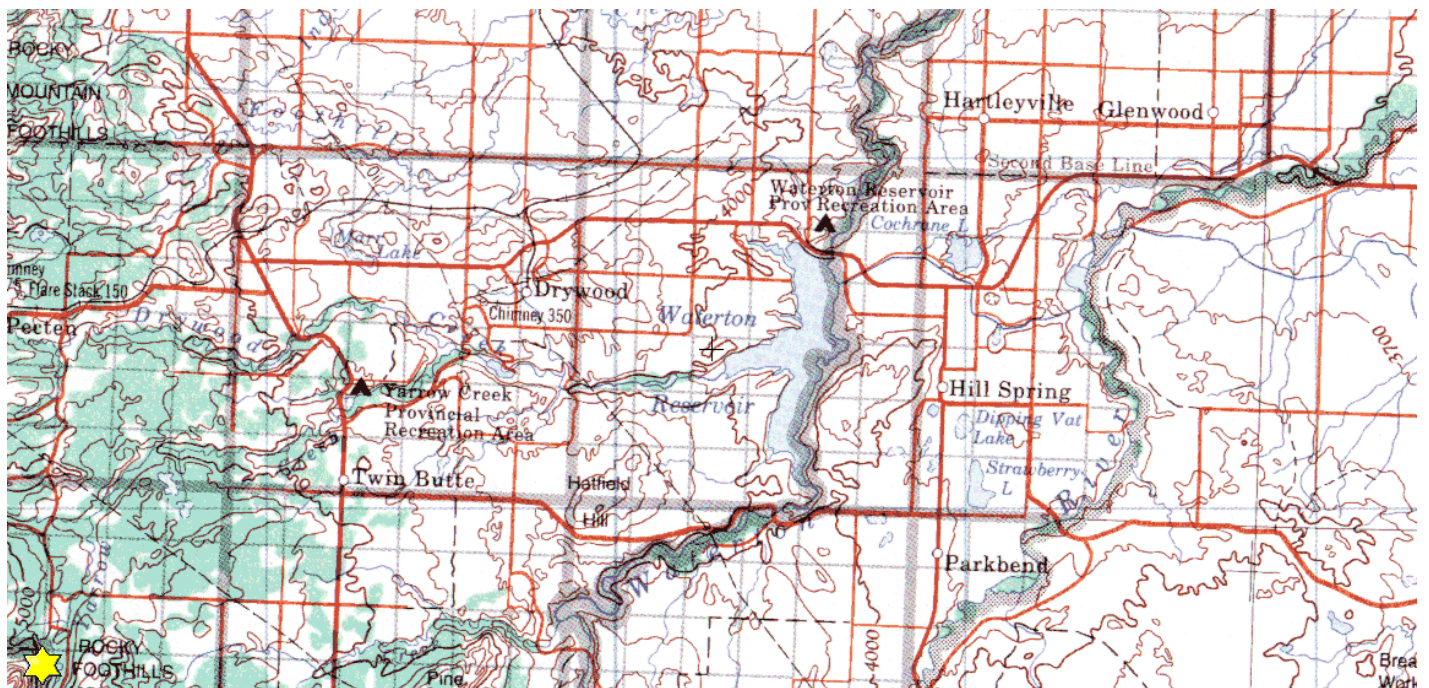
Blind Canyon Property

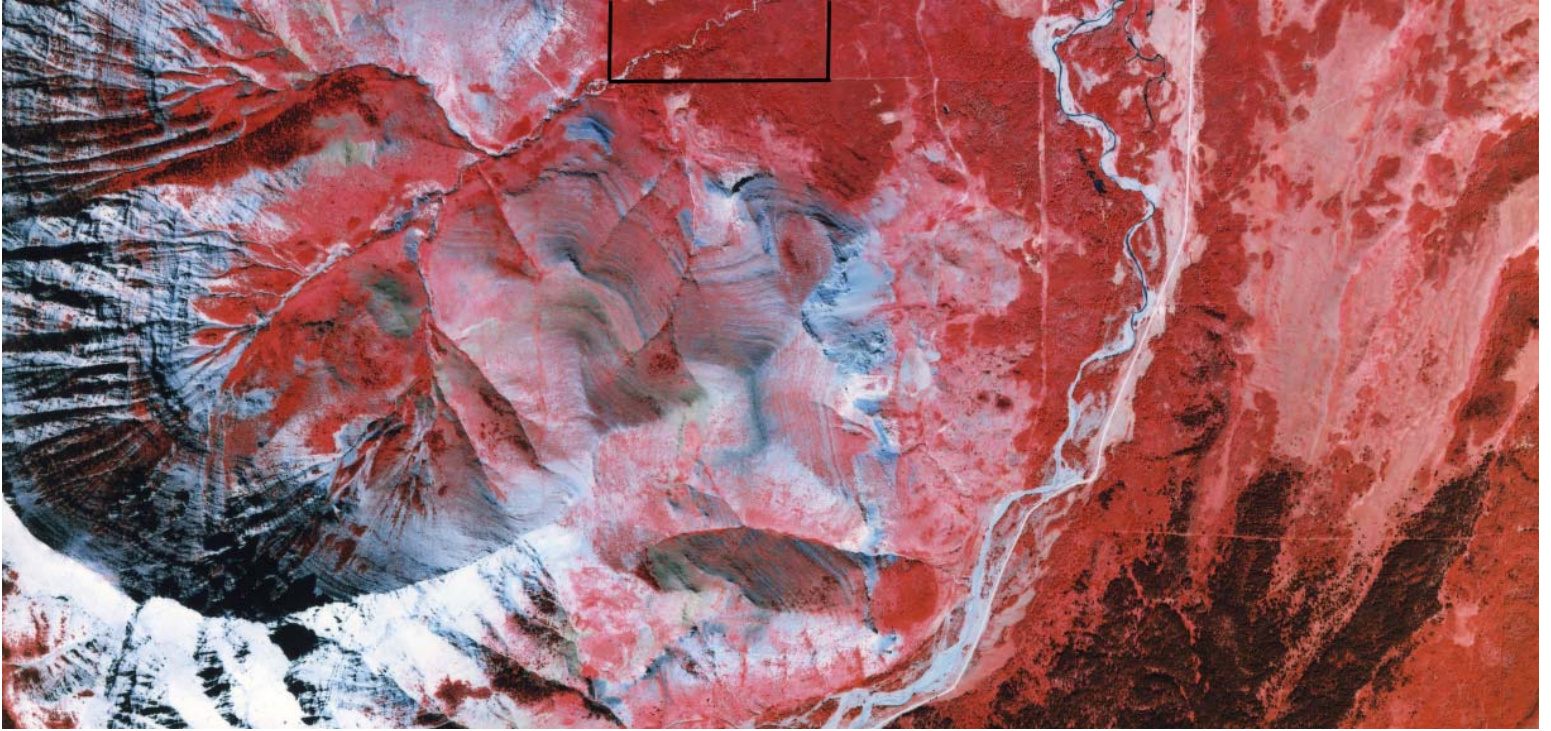
NE-08-008-05-W5M, SE-08-008-05-W5M

Description: The 160 acre Blind Canyon Property is located approximately 30 km south of Pincher Creek. It is west of Spread Eagle Road along the forest reserve boundary between Yarrow and Spionkop Creek. Wildlife in the area include black and grizzly bears, white-tailed deer, bighorn sheep, wolves, numerous songbirds and small mammals.

Partners: Alberta Conservation Association, Alberta Fish and Game Association, Nature Conservancy of Canada, Rocky Mountain Elk Foundation Canada

Special Restrictions: Day use only. No open fires. Foot access only. Access the property through the Forest Reserve.





Alberta Fish & Game Association, 6924 - 104street, Edmonton Alberta, T6H 2L7
Phone: 780-437-2342, Fax: 780-438-6872
Email: Office@afga.org
Website: www.afga.org