



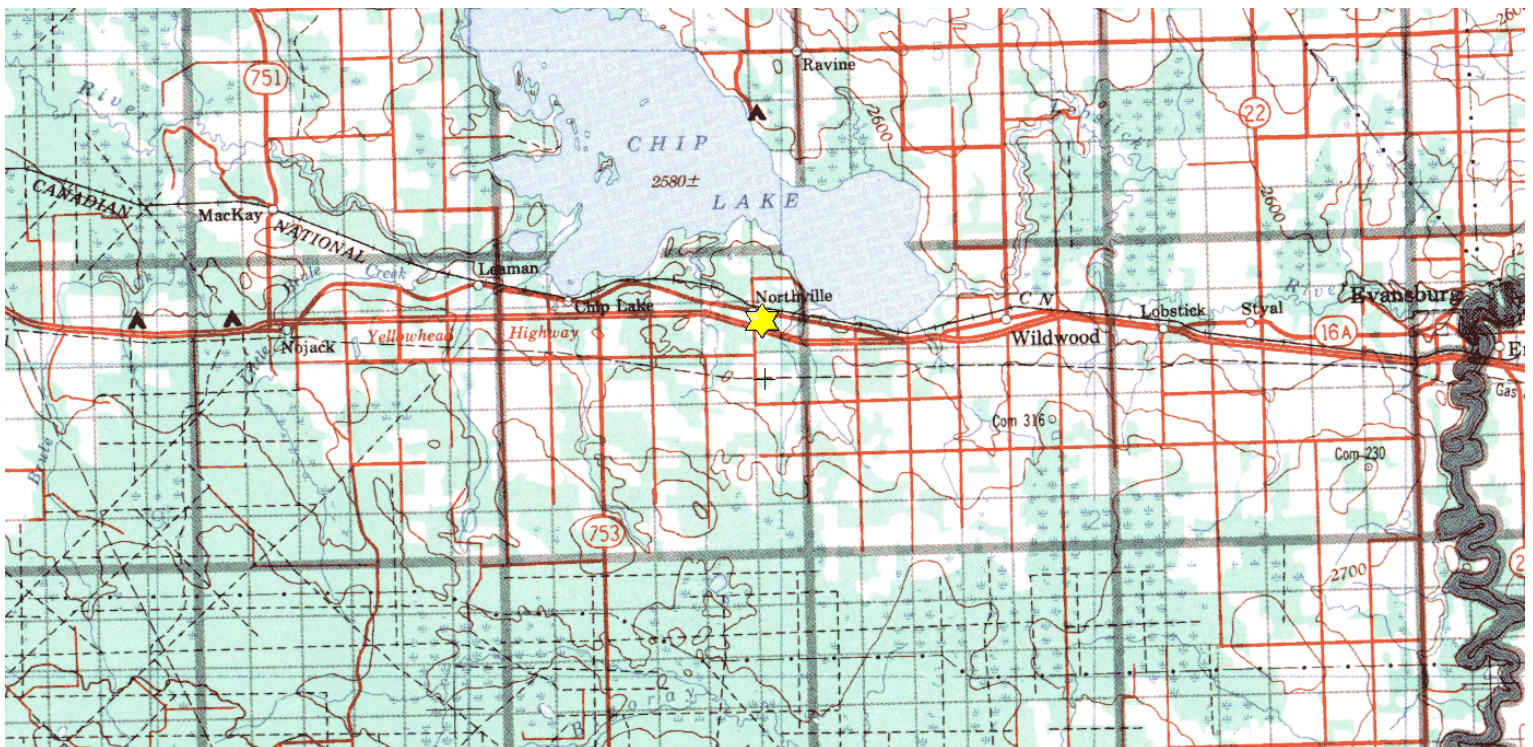
# Walters

**Pt. NW-25-53-10 W5M**

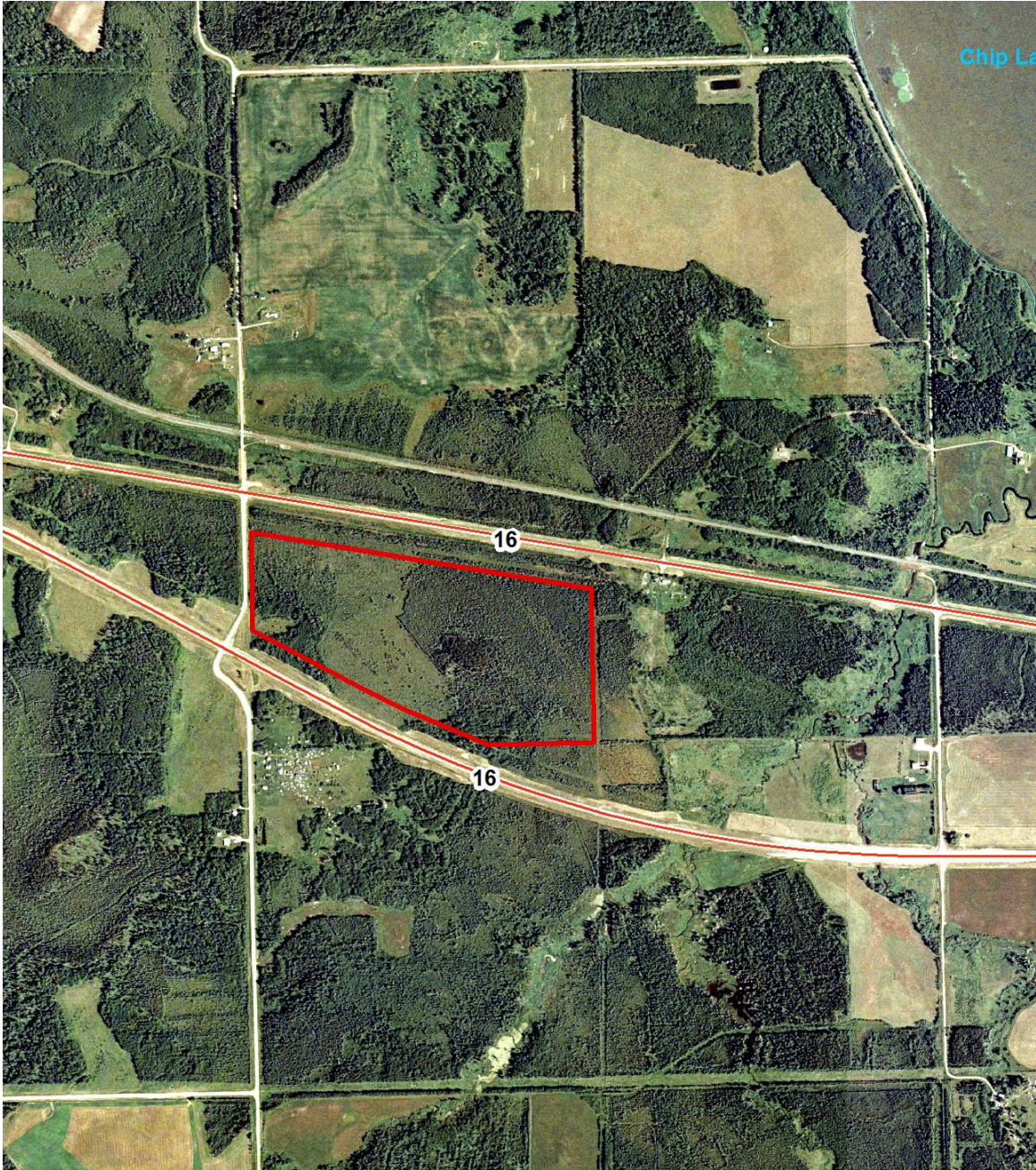
**Description:** This 68 acre site is located 73 km east of Edson and 110 km west of Edmonton along Hwy 16, immediately south of Chip Lake. There is a dense black spruce bog forest with a heavy Labrador tea understory and pockets of tamarack, lodgepole pine and a small aspen stand in the southwest corner. The location of this site makes it a welcome stop for weary travellers looking to enjoy a natural setting. Pick a handful of cranberries or gather some shaggy mane mushrooms for supper. Wildlife viewing opportunities are possible for black bear (see BearSmart.com), the occasional moose, white-tailed and mule deer, grouse and a variety of songbirds.

**Partners:** Alberta Conservation Association, Alberta Fish and Game Association

**Special Restrictions:** Day use only. No open fires. Foot access only.







Alberta Fish & Game Association, 6924 – 104 Street, Edmonton Alberta, T6H 2L7  
Phone: 780-437-2342, Fax: 780-438-6872  
Email: [Office@afga.org](mailto:Office@afga.org)  
Website: [www.afga.org](http://www.afga.org)