

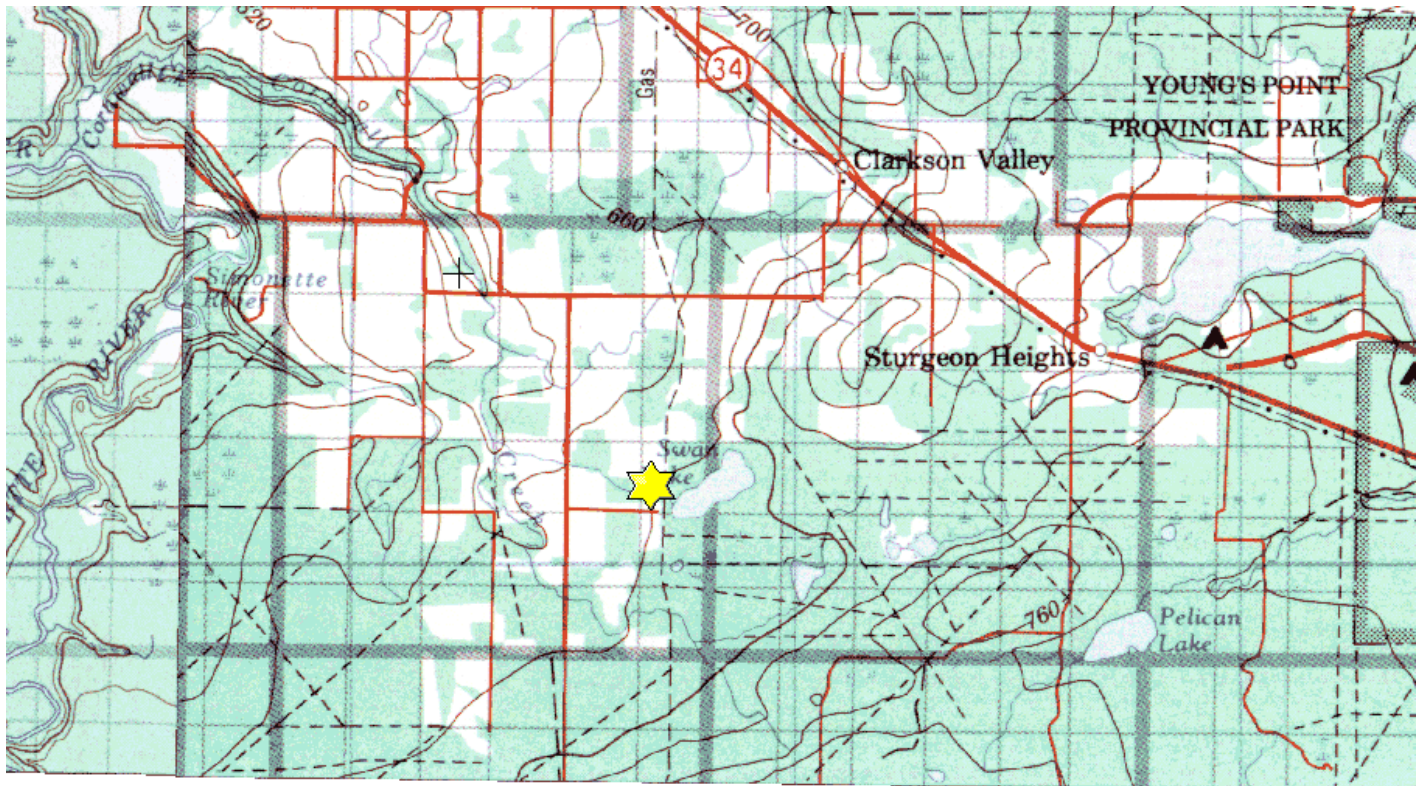


Swan Lake Property SW-13-70-26-W5

Description: This 159 acre property has a small upland forage plot managed as nesting cover and as a winter food source for ungulates. The rest of the property is idled parkland supporting elk, moose, white-tailed and mule deer and ruffed grouse. The water control structure for Swan Lake is on the property, which helps maintain the popular rainbow trout fishery.

Partners: ACA, DU, RMEF, ASRPWF

Special Restrictions: Day use only. No open fires. Foot access only.





Alberta Fish & Game Association, 6924 - 104street, Edmonton Alberta, T6H 2L7
Phone: 780-437-2342, Fax: 780-438-6872
Email: Office@afga.org
Website: www.afga.org