



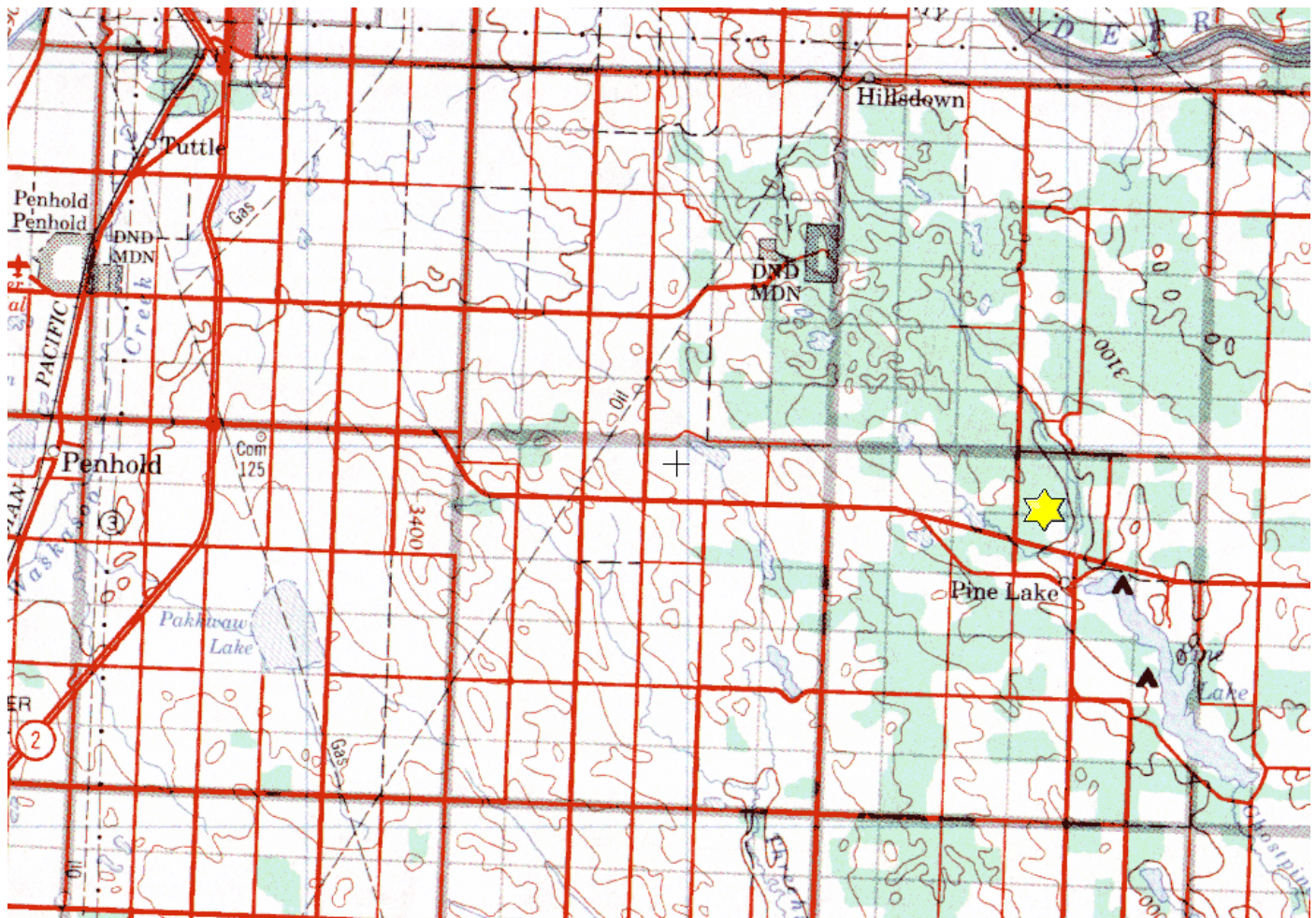
Stonhouse Property

NW-27-36-25-W4, SW34-36-25-W4,
NW 34-36-25-W4, NE-34-36-25-W4

Description: This 639 acre property primarily comprised of native parkland and features a diverse mix of aspen-covered rolling hills, open meadows and numerous wetlands. Wildlife found on the property is equally diverse with white-tailed deer, mule deer, ruffed grouse, waterfowl and a wide variety of small mammals and birds being regular residents.

Partners: Ducks Unlimited, Alberta Conservation Association

Special Restrictions: Day use only. No open fires. Foot access only.





Alberta Fish & Game Association, 6924 - 104street, Edmonton Alberta, T6H 2L7
Phone: 780-437-2342, Fax: 780-438-6872
Email: Office@afga.org
Website: www.afga.org