



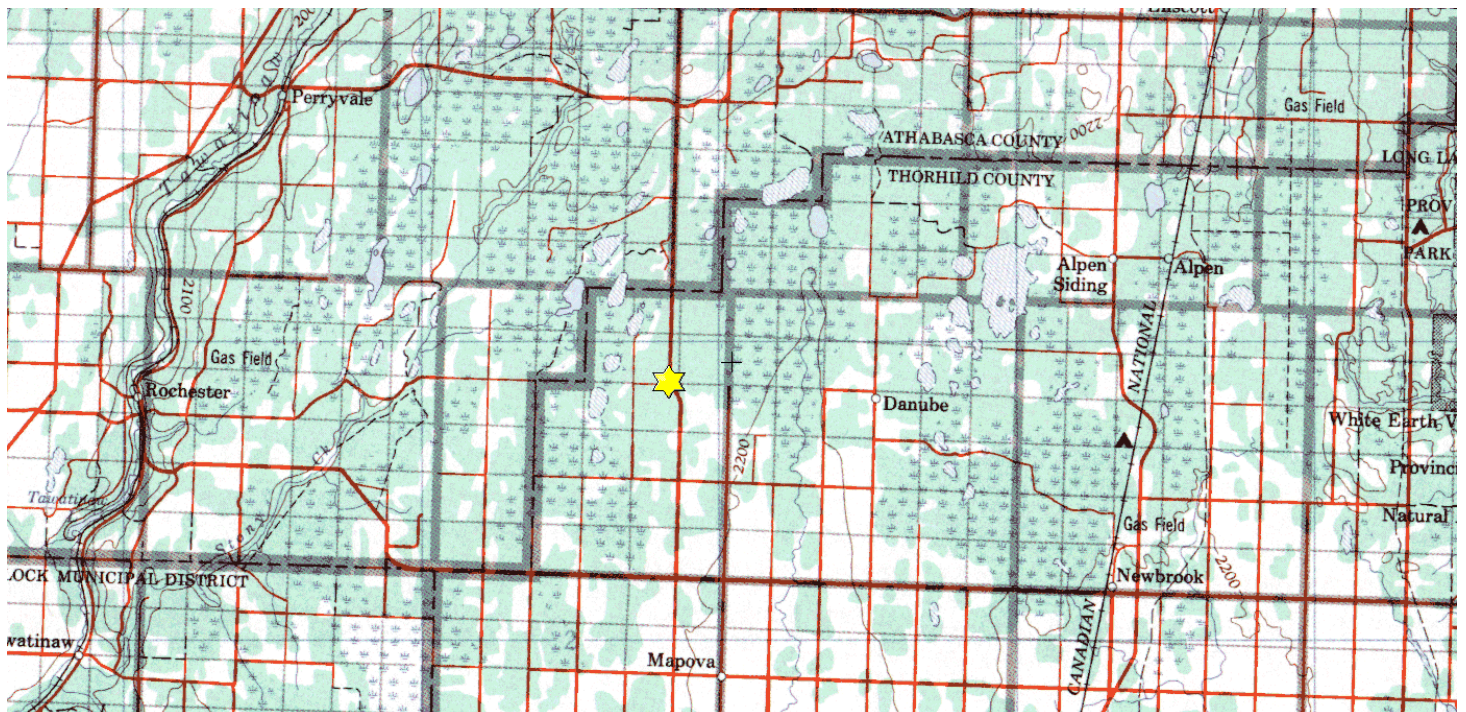
South Pine Creek

NE-23-062-22-W4M

Description: This 150 acre site lies approximately 37 km south of Athabasca and is easily accessed from the north side or from Highway 627, which bisects the property. From Athabasca, travel south on Highway 827 for approximately 37 km and turn west on Twp Rd 624. The North Pine Creek Conservation Site (D3-173) is located 4 km directly north. The site consists of undisturbed intact boreal forest and is home to mule deer, moose, black bear and upland game birds, as well as a variety of furbearers and songbirds. Hunting and wildlife viewing are the primary recreational activities that occur here.

Partners: Alberta Conservation Association, Alberta Fish & Game Association, Suncor Energy Canada

Special Restrictions: Day use only. No open fires. Foot access only.





South Pine Creek Conservation Site
(NE-23-062-22-W4M)

 South Pine Creek Conservation Site

350 175 0 350 Meters



Alberta Fish & Game Association, 6924 – 104 Street, Edmonton Alberta, T6H 2L7
Phone: 780-437-2342, Fax: 780-438-6872
Email: Office@afga.org
Website: www.afga.org