



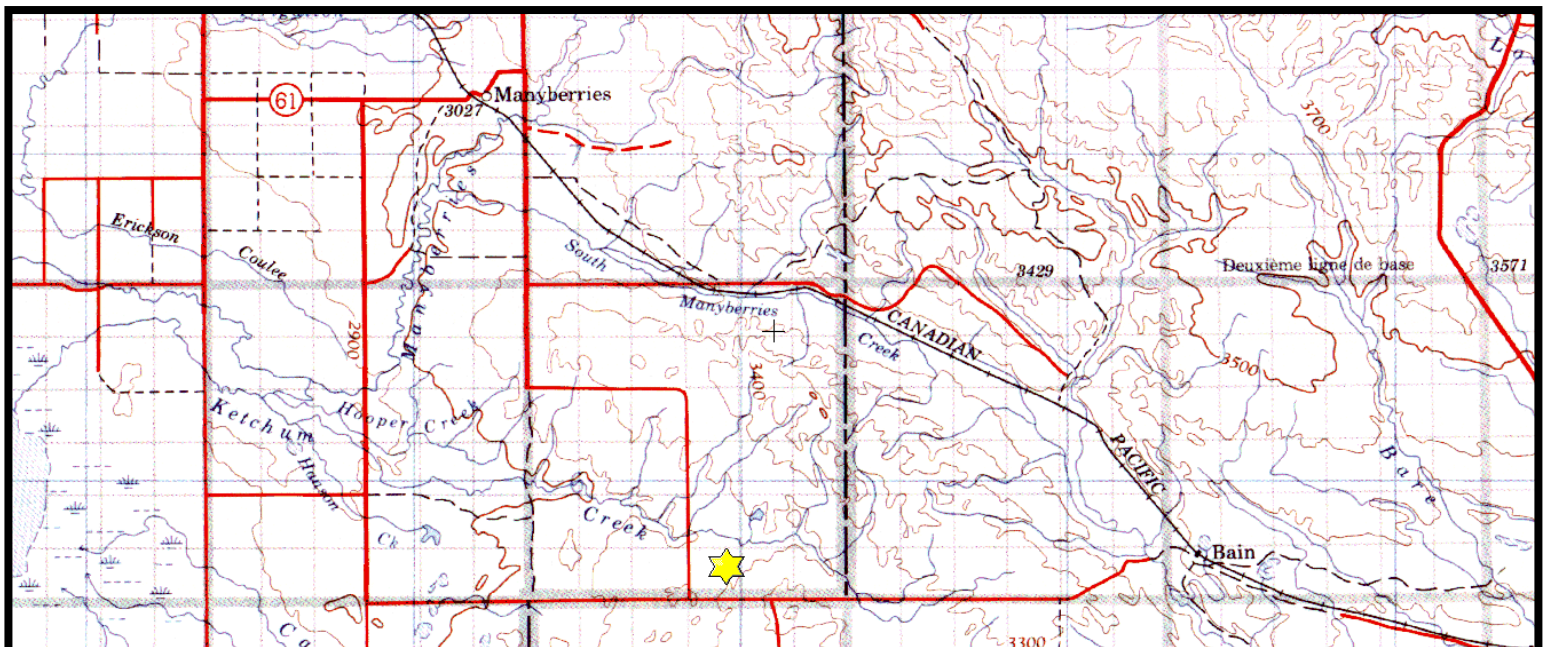
Silver Sage Property

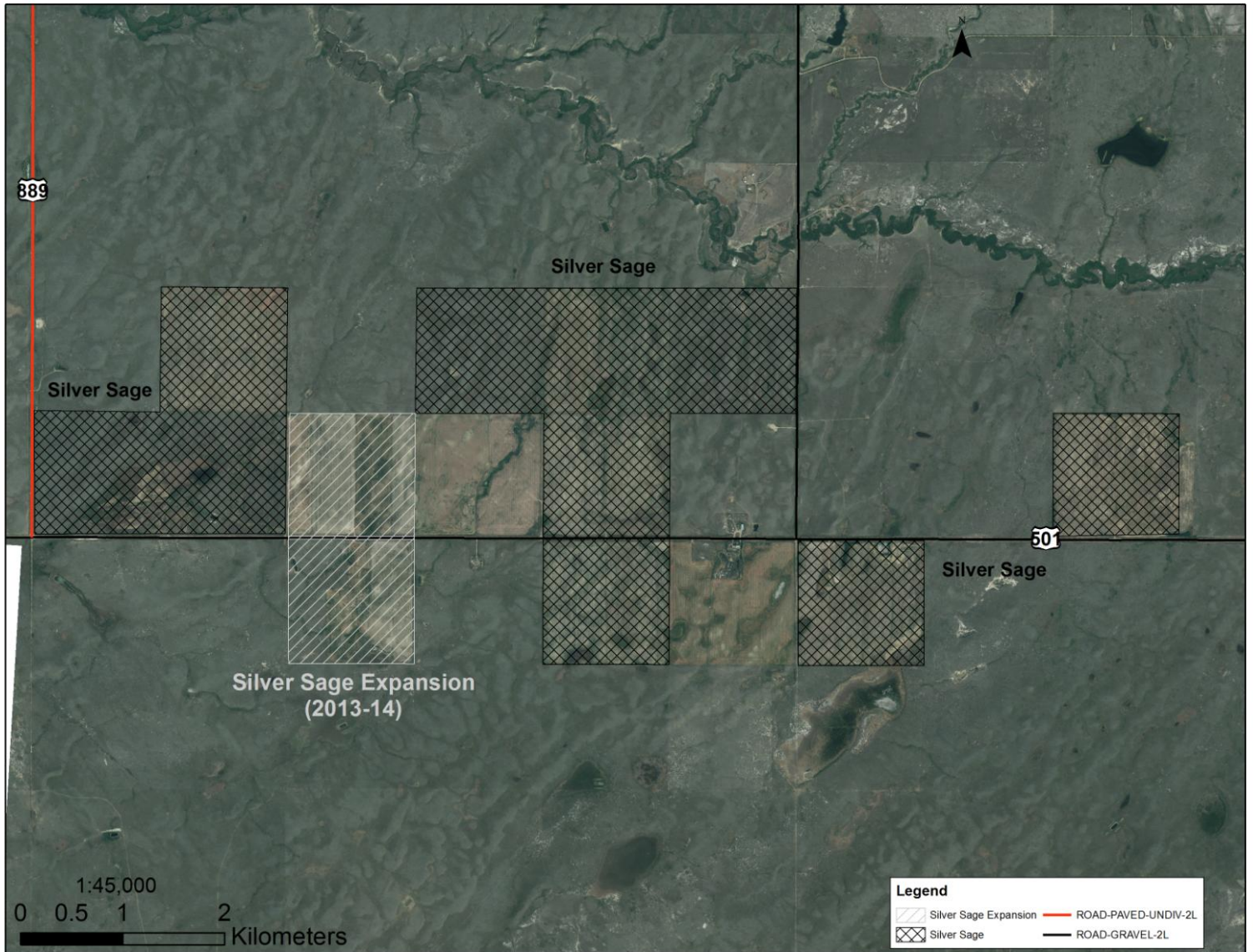
NW-33-003-05-W4M, NW-34-003-05-W4M, SW-02-004-05-W4M,
NW/NE/SW-04-004-05-W4M, NE/SW-05-004-05-W4M,
NE/SW/SE-06-004-05-W4M, NW-32-003-05-W4M

Description: Silver Sage was expanded in 2014 from 1,583 acres to 1,895. This site is located approximately 15 km south of Manyberries along secondary Highway 889 and extends to the east along secondary Highway 501. Wildlife surveys completed in 2010 and 2011 identified 65 species that enjoy the mix of native prairie uplands, ephemeral wetlands and cropland. Management activities focus on restoring cropland back to native grassland in order to benefit greater sage-grouse and other grassland species such as Sprague's pipit, sharp-tailed grouse and pronghorn antelope. Other wildlife observed here includes ferruginous hawks, mule deer, prairie rattlesnakes, badgers, pintails, mallards and various songbirds.

Partners: ACA, AFGA, DUC, Government of Canada Habitat Stewardship Program for Species at Risk, Medicine Hat Fish & Game, MULTISAR, PF-Calgary and Chinook Chapters

Special Restrictions: Day use only. No open fires. Foot access only.





Alberta Fish & Game Association, 6924 – 104 Street, Edmonton Alberta, T6H 2L7
 Phone: 780-437-2342, Fax: 780-438-6872
 Email: Office@afga.org
 Website: www.afga.org