



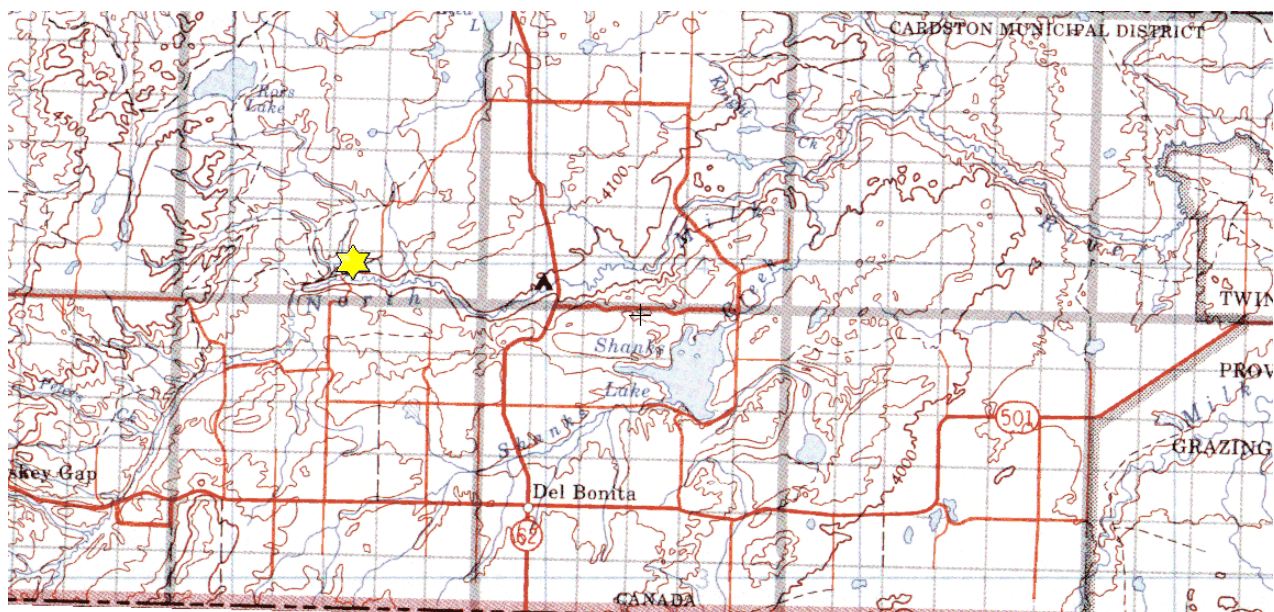
Sandstone Ranch

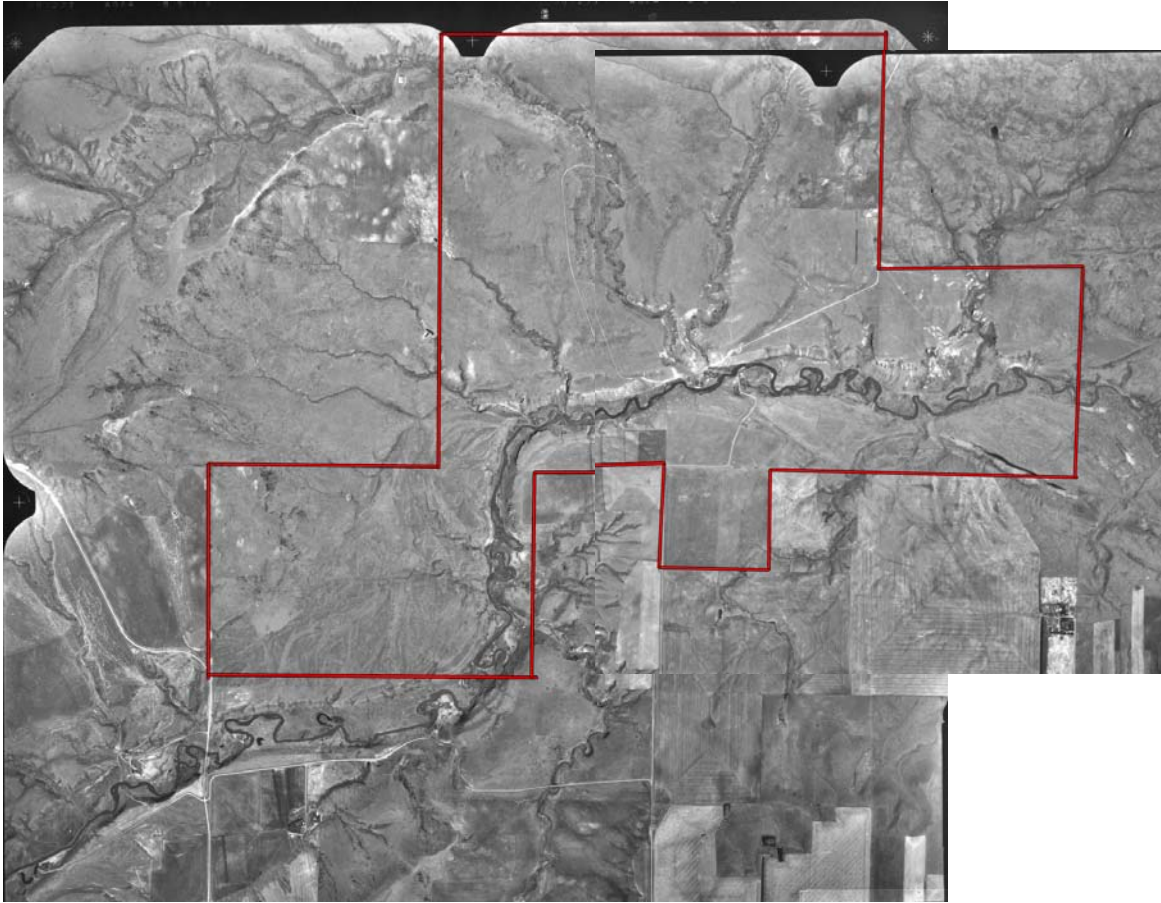
NW-02-002-22-W4M, NE-02-002-22-W4M, SW-02-002-22-W4M, SE-02-002-22-W4M, NW-03-002-22-W4M, NE-03-002-22-W4M, SW-03-002-22-W4M, SE-03-002-22-W4M, NW-04-002-22-W4M, NE-04-002-22-W4M, SW-04-002-22-W4M, SE-04-002-22-W4M, NW-09-002-22-W4M, NE-09-002-22-W4M, SW-09-002-22-W4M, SE-09-002-22-W4M, NW-10-002-22-W4M, NE-10-002-22-W4M, SW-10-002-22-W4M, SE-10-002-22-W4M, NW-32-001-22-W4M, NE-32-001-22-W4M, SW-32-001-22-W4M, SE-32-001-22-W4M, NW-33-001-22-W4M, SW-33-001-22-W4M, NW-34-001-22-W4M

Description: This property is located approximately 35 km south of Magrath. To access the north entrance, head south from Magrath approximately 30 km on Highway 62, then 5 km west on Township Road 24. A yellow gate and signage mark the entrance to the ranch. To access the south entrance, head south on Highway 62, then 5.5 km west on Township Road 14, then 3.2 km north on RR 223. The ranch encompasses 4,147 acres within the Foothills Fescue grasslands with the North Milk River flowing through the southern portion of property. Wildlife found in the area include mule deer, sharp-tailed grouse, gray partridge, raptors and a variety of small mammals, songbirds and the occasional elk. Angling opportunities for sauger also exist within the river.

Partners: Alberta Conservation Association, Alberta Fish and Game Association, Alberta Sustainable Resource Development, Nature Conservancy of Canada, Sandstone Ranch Grazing Co-op

Special Restrictions: Foot access for hunting, angling or hiking permitted on a call-in basis (403-331-7657). Day use only. No open fires. Refer to the Alberta Guide to Sportfishing Regulations.





Alberta Fish & Game Association, 6924 - 104street, Edmonton Alberta, T6H 2L7
Phone: 780-437-2342, Fax: 780-438-6872
Email: Office@afga.org
Website: www.afga.org