



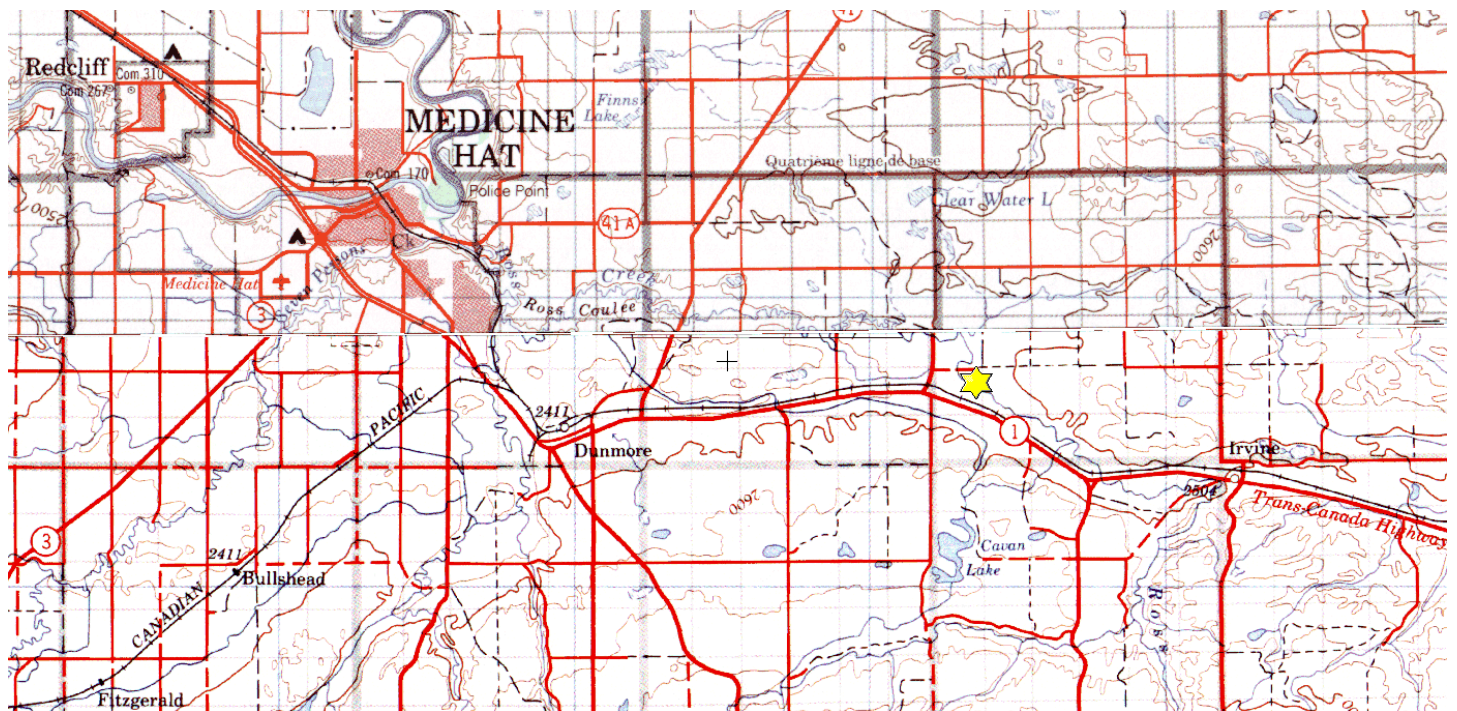
Ross Creek Property

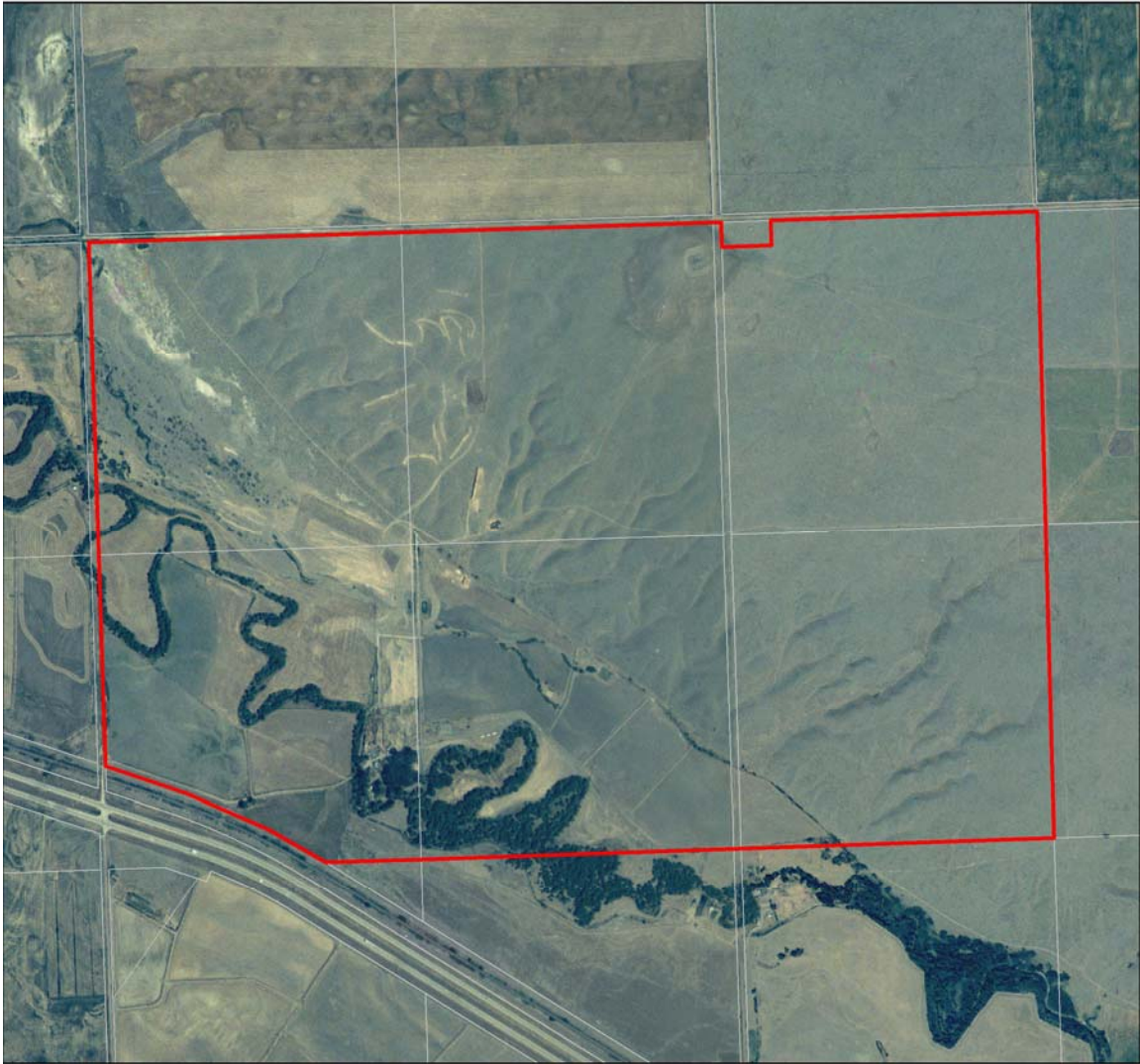
NW/NE/SW/SE-08-012-03-W4M, NW/SW-09-012-03-W4M

Description: This 937 acre site was purchased in 2012. It is located approximately 15 km east of Medicine Hat along the Trans-Canada Highway. This property conserves native prairie and enhances habitat for pronghorn, white-tailed deer, mule deer, Hungarian partridge, ring-necked pheasant, Sprague's pipit and other species at risk such as sharp-tailed grouse and northern leopard frog. Over 600 acres consist of native grass communities and nearly 300 acres are comprised of a mix of native trees and shrubs along Ross Creek, tame grasses and ephemeral wetlands.

Partners: ACA, Alberta Fish & Game Association Wildlife Trust Fund, Government of Canada Habitat Stewardship Program for Species at Risk, La Terra Ventures Inc., and Pheasants Forever – Calgary and Chinook Chapters.

Special Restrictions: Day use only. No open fires. Foot access only.





Alberta Fish & Game Association, 6924 – 104 Street, Edmonton Alberta, T6H 2L7
Phone: 780-437-2342, Fax: 780-438-6872
Email: Office@afga.org
Website: www.afga.org