



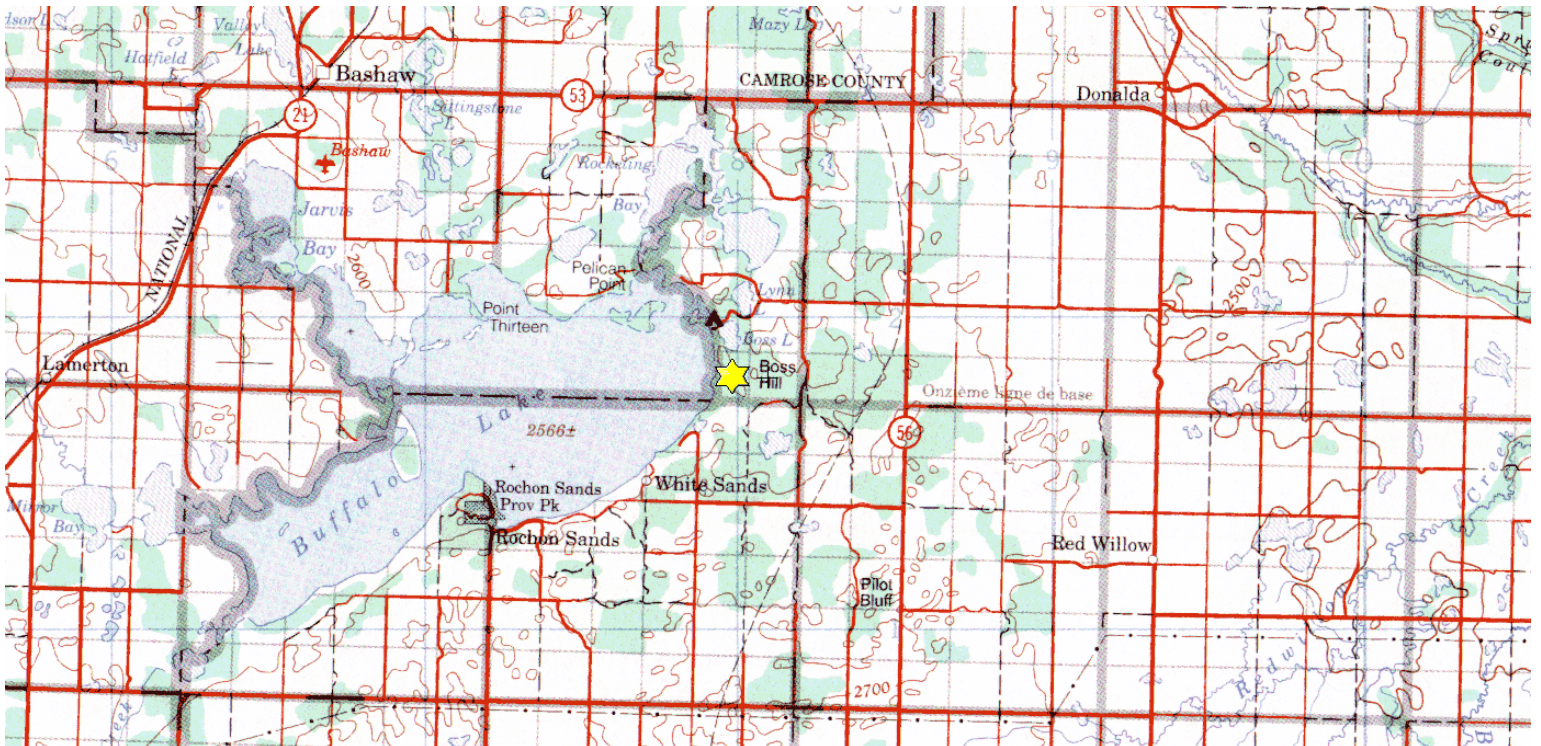
# Rachael Agnes Hayes

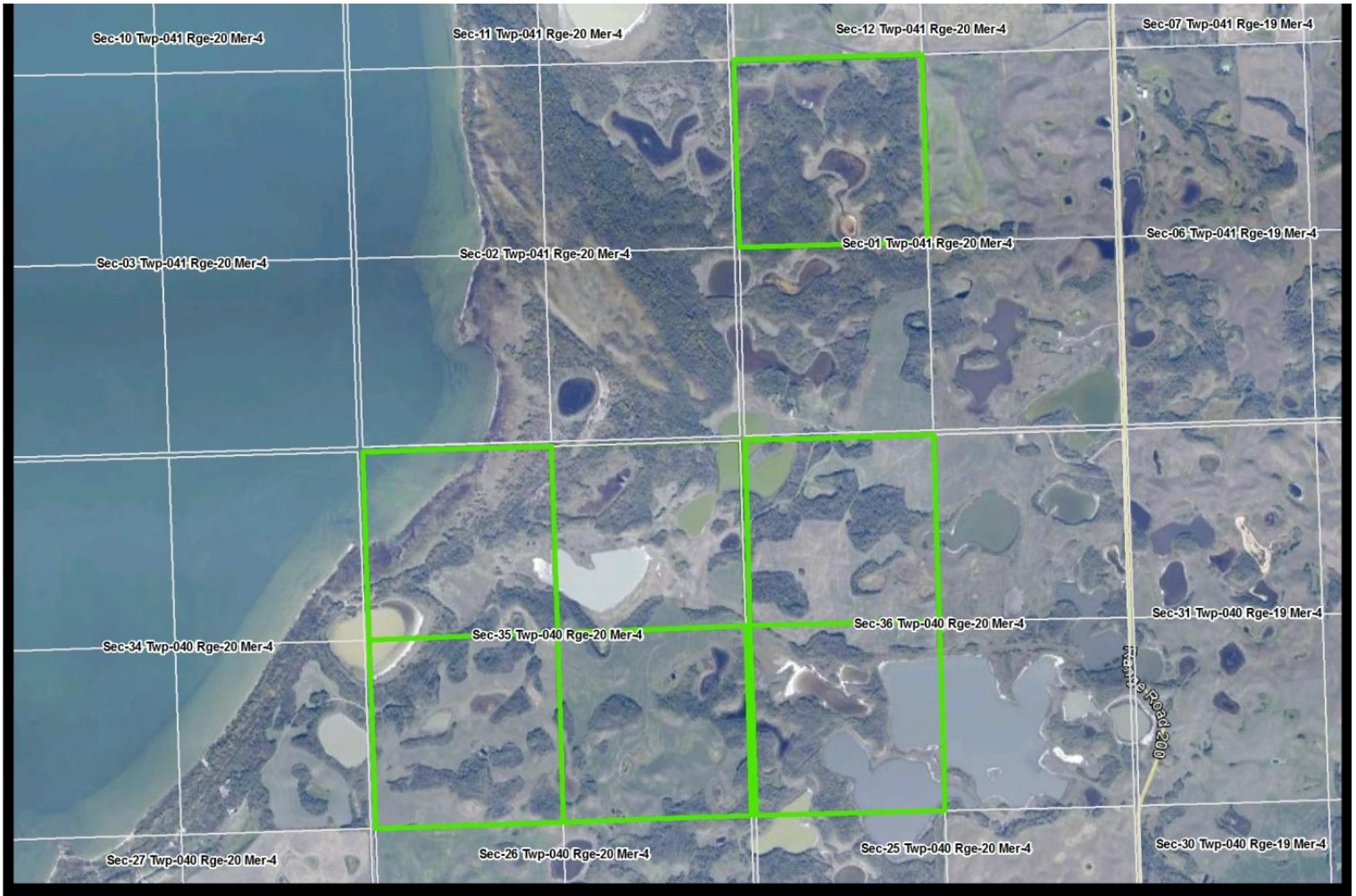
Ptns. of NE 35-40-20-W4M and  
Ptns. of SECTION 2-41-20-W4M

**Description:** This 418.5 acre site is located along the shores of Buffalo Lake and contains some significant habitat and cultural values. The lands comprising the block represent a variety of predominantly native landscapes that have been operated as part of a single ranching unit for many years. Each of the titled parcels is in some way influenced either directly by Buffalo Lake or somewhat indirectly by the related wetland and lakes complex inherent with Buffalo Lake. Some of the lands are high and well drained while other components are represented either by standing waters, seasonal wetlands, or some combination. The dominant landscape feature is a height of land, known as Boss Hill, that comprises a good portion of Section 2. There is a network of trails from the farmsite to other areas of the ranch, but no developed roadways. Moose, elk, white-tailed deer and mule deer are found on the property as are a variety of birds and small mammals.

**Partners:** Alberta Fish and Game Association, Nature Conservancy of Canada

**Special Restrictions:** Day use only. No open fires. Foot access only.





Alberta Fish & Game Association, 6924 – 104 Street, Edmonton Alberta, T6H 2L7  
Phone: 780-437-2342, Fax: 780-438-6872  
Email: [Office@afga.org](mailto:Office@afga.org)  
Website: [www.afga.org](http://www.afga.org)