

# ALBERTA FISH & GAME ASSOCIATION

## Official Scoring Form

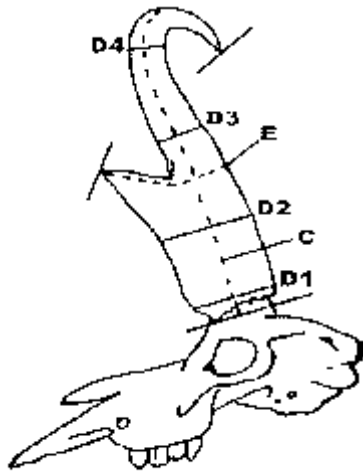
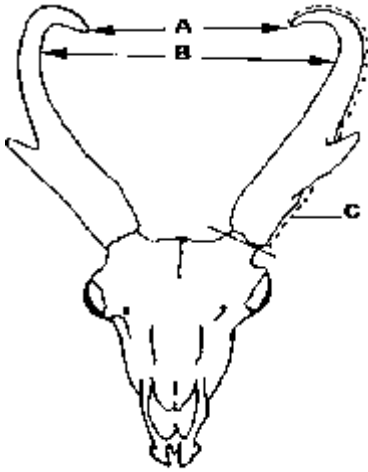


13045 156 St NW  
 EDMONTON, ALBERTA T5V 0A2  
 PHONE: (780) 437-2342  
 FAX: (780) 438-6872  
 EMAIL: [office@afga.org](mailto:office@afga.org) WEBSITE: [www.afga.org](http://www.afga.org)

Official Scoring System of the  
 Boone and Crockett Club

### PRONGHORN

Alberta Min. Score	80
Boone & Crockett Min. Score	82
Pope & Young Min. Score	67
Longhunter Society Min. Score	63



SEE OTHER SIDE FOR INSTRUCTIONS	Supplementary Data	Column 1	Column 2	Column 3
A. Tip to Tip Spread		Right Horn	Left Horn	Difference
B. Inside Spread of Main Beam				
C. Length of Horn				
D-1 Circumference of Base				
D-2 Circumference at First Quarter (this measurement taken at _____ inches from base)				
D-3 Circumference at Second Quarter (this measurement taken at _____ inches from base)				
D-4 Circumference at Third Quarter (this measurement taken at _____ inches from base)				
E. Length of Prong				
<b>TOTALS</b>				

<b>ADD</b>	Column 1		Location killed (not WMU) (closest town or area)		How taken ( <b>bow/rifle/black powder or found</b> )
	Column 2		Date Killed	By Whom killed	
<b>Total</b>			Present owner		Phone No.
<b>SUBTRACT Column 3</b>			Address		Postal Code
<b>FINAL SCORE</b>			Guide's Name and Address		
			<b>Remarks: (Mention any abnormalities)</b>		

I certify that I have measured the above trophy on \_\_\_\_\_ 20\_\_\_\_\_

at (address) \_\_\_\_\_ City \_\_\_\_\_

Province \_\_\_\_\_ Postal Code \_\_\_\_\_ and that these measurements and date are, to the best of my knowledge and belief, made in accordance with the instructions given.

Measurer: \_\_\_\_\_  
 (Please Print) No

Signature: \_\_\_\_\_  
 Alberta Fish and Game Official Measurer

Address \_\_\_\_\_

Phone No. \_\_\_\_\_

City \_\_\_\_\_ Province \_\_\_\_\_ Postal Code \_\_\_\_\_

Witness: \_\_\_\_\_

# INSTRUCTIONS

All measurements must be made with a flexible steel tape to the nearest one-eighth of an inch. Wherever is necessary to change direction of measurement, mark a control point, and swing tape at this point. To simplify addition, please enter fractional figures in eighths.

Official measurements cannot be taken for at least sixty days after the animal was killed.

**Supplementary Data measurements:** indicate conformation of the trophy. None of the figures in Lines A and B are to be included in the score. Evaluation of conformation is a matter of personal preference.

- A. **Tip to Tip Spread** measured between tips of horns.
- B. **Inside Spread of Main Beams** measured at right angles to the center line of the skull at widest point between main beams.
- C. **Length of Horn is** measured on the outside curve, so the line taken will vary with different heads, depending on the direction of their curvature. Measure along the centre of the outer curve from tip of horn to a point in line with the lowest edge of the base.

D-1 **Measure around base** of horn at right angles to long axis. Tape must be in contact with the lowest circumference of the horn in which there are no serrations.

D-2-3-4 **Divide measurement of LONGER** horn by four, mark **BOTH** horns at these quarters even though other horn is shorter, and measure circumferences at these marks. If any portion of the prong occurs at D-3, take this measurement immediately above prong. Should D-2 land on the swelling of the prong, take D-2 measurement immediately below swelling of prong.

E. **Length of Prong** measure from the tip of the prong along the upper edge of the outer curve; thence, around the horn to a point at the rear of the horn where a straight edge across the back of both horns touches the horn. This measurement around the horn from the base of the prong should be taken at right angles to the long axis of the horn.

\* Note measurement of each quarter from base (ie longest horn = 16" – quarters should be noted as D-2 = 4, D-3 = 8, D-4 = 12). If adjustments are made for swelling of prong on D-2 or D-3 measurement, note these adjustments in "remarks" section.

**Drying Period:** To be eligible for entry in the Alberta Records, a trophy must first have been stored under normal room temperature and humidity for at least 60 consecutive days. No trophy will be considered which has in any way been altered from its natural state.

## FAIR CHASE STATEMENT

To make use of the following methods shall be deemed as unfair chase and unsportsmanlike:

1. Spotting or herding game from the air, followed by landing in it's vicinity for pursuit;
2. Herding or pursuing game with motor-powered vehicles;
3. Use of electronic communications for attracting, locating or observing game or guiding the hunter to such game;
4. Hunting game confined by artificial barriers, including escape-proof fencing, or hunting game transplanted solely for the purpose of commercial shooting;
5. Or as may otherwise be deemed unfair or unsportsmanlike by the Trophy Committee of the Alberta Fish & Game Association.

## HUNTER AFFIDAVIT

I certify that the trophy scored on this chart was taken in fair chase and in accordance with the laws of the Province of Alberta and during regulation hunting season. Valid/Current WIN Card # \_\_\_\_\_

Date: \_\_\_\_\_ Signature of Hunter \_\_\_\_\_