

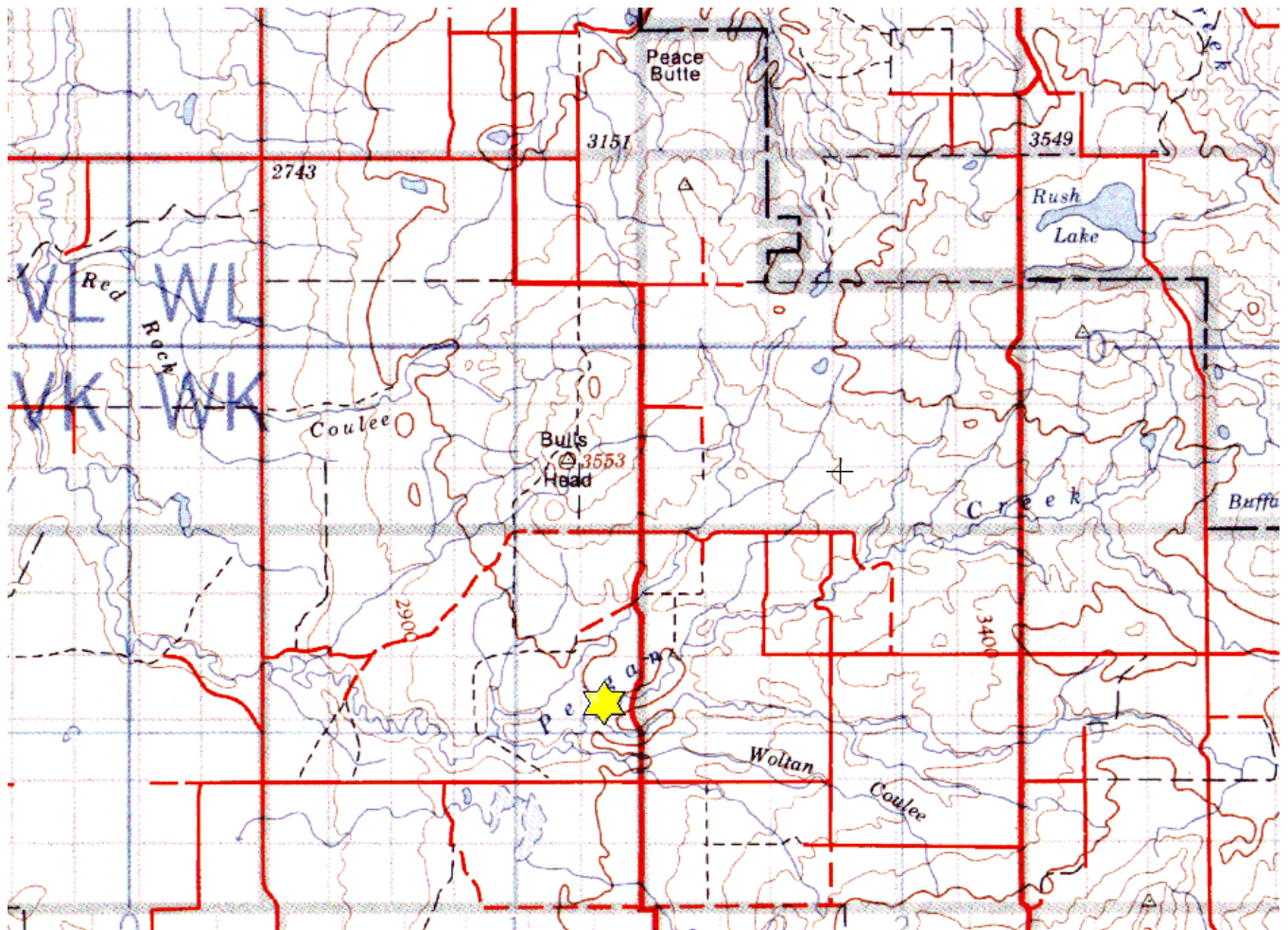


Peigan Creek Conservation Area S-24-7-7-W 4, N-12-7-7-W 4

Description: The Peigan Creek Conservation Property is located southwest of Medicine Hat and consists of 640 acres of primarily native prairie habitat. There is a significant amount of riparian habitat associated with the property. Peigan Creek and a tributary branch flow through the property. This riparian corridor contains thorny buffaloberry, willow, cattail, cottonwoods and other riparian vegetation. Hunting opportunities exist for mule deer, pheasants and other upland birds on the property and other regular wildlife observed on the property includes coyotes, porcupines, rattlesnakes, and a host of prairie birds.

Partners: ACA, NCC, Medicine Hat, Lethbridge, Picture Butte, Zone 1, Sarcee F&G, Pheasants Forever

Special Restrictions: Day use only. No open fires. Foot access only.





Alberta Fish & Game Association, 6924 - 104street, Edmonton Alberta, T6H 2L7

Phone: 780-437-2342, Fax: 780-438-6872

Email: Office@afga.org

Website: www.afga.org