



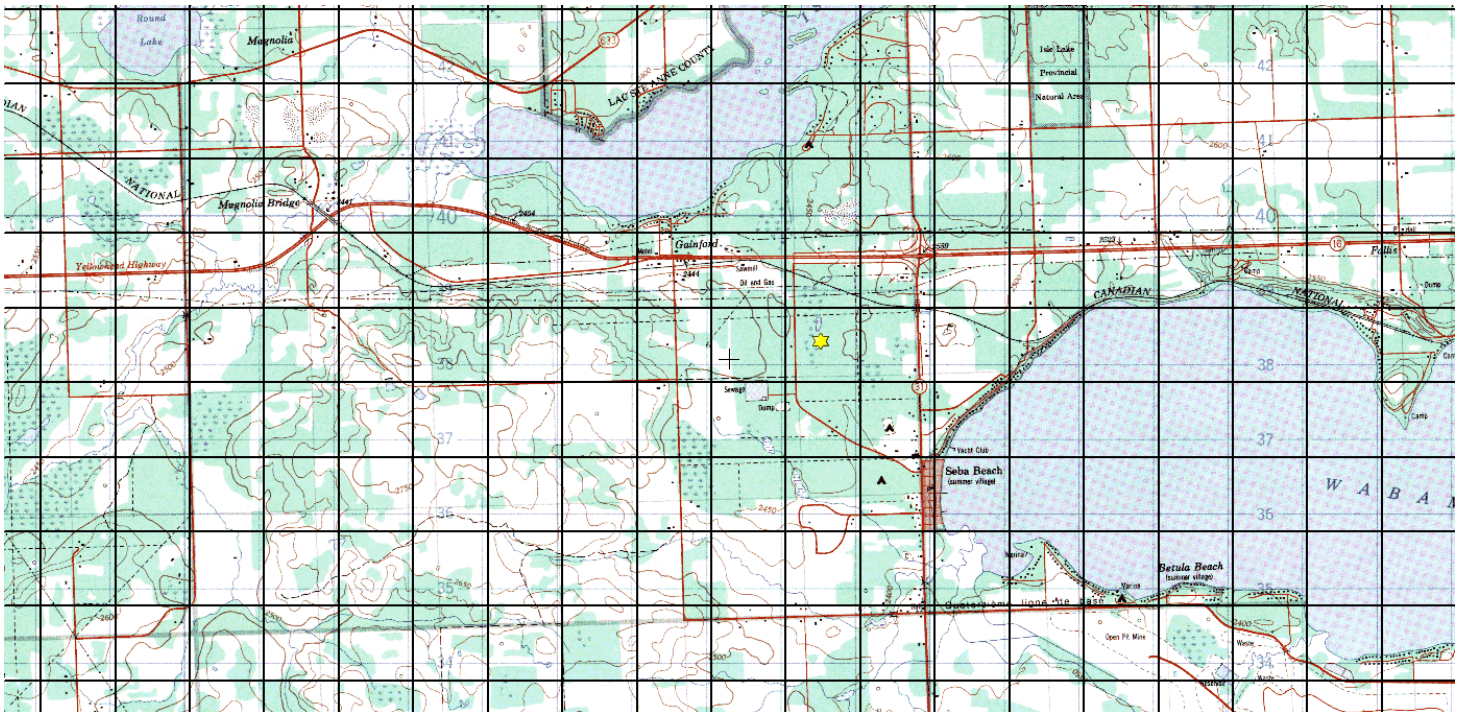
Parkland Conservation Site

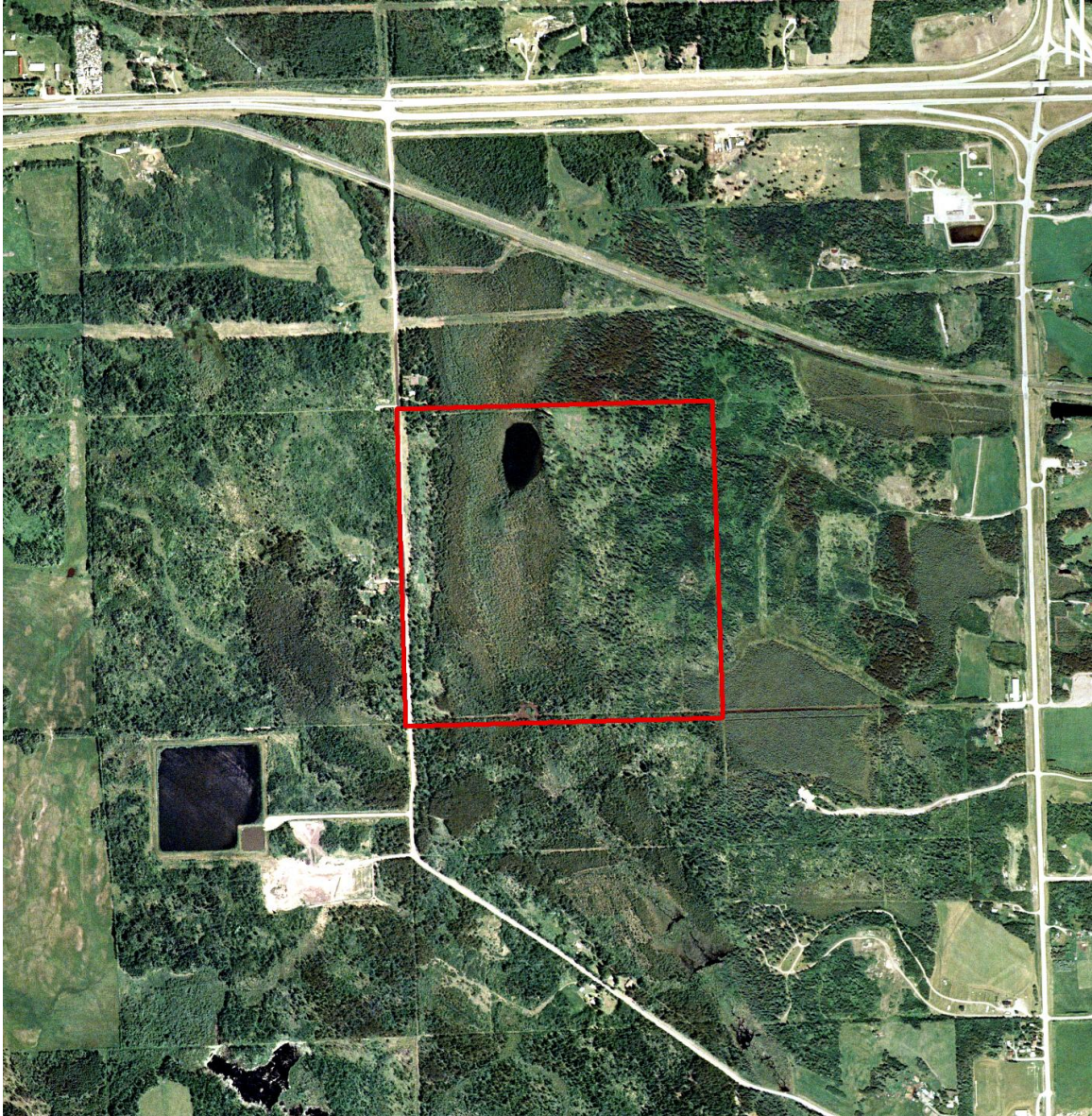
SW-13-53-6-W5

Description: This 160 acre site is located approximately 48 km west of Stony Plain, 1.6 km south of Highway 16 just west of Wabamun Lake. Consisting mainly of aspen forest, black spruce and tamarack bogs, small wetlands and an unnamed lake this site supports numerous bird species and small furbearers such as red squirrels, mice and voles. There is a good understory of dogwood, willow, alder and wild rose, with some saskatoon and chokecherry. Other wildlife that can be found here includes black bear, moose, white-tailed and mule deer, grouse and a variety of waterfowl.

Partners: Alberta Conservation Association, Alberta Fish and Game Association

Special Restrictions: Day use only. No open fires. Foot access only.





Alberta Fish & Game Association, 6924 – 104 Street, Edmonton Alberta, T6H 2L7

Phone: 780-437-2342, Fax: 780-438-6872

Email: Office@afga.org

Website: www.afga.org