



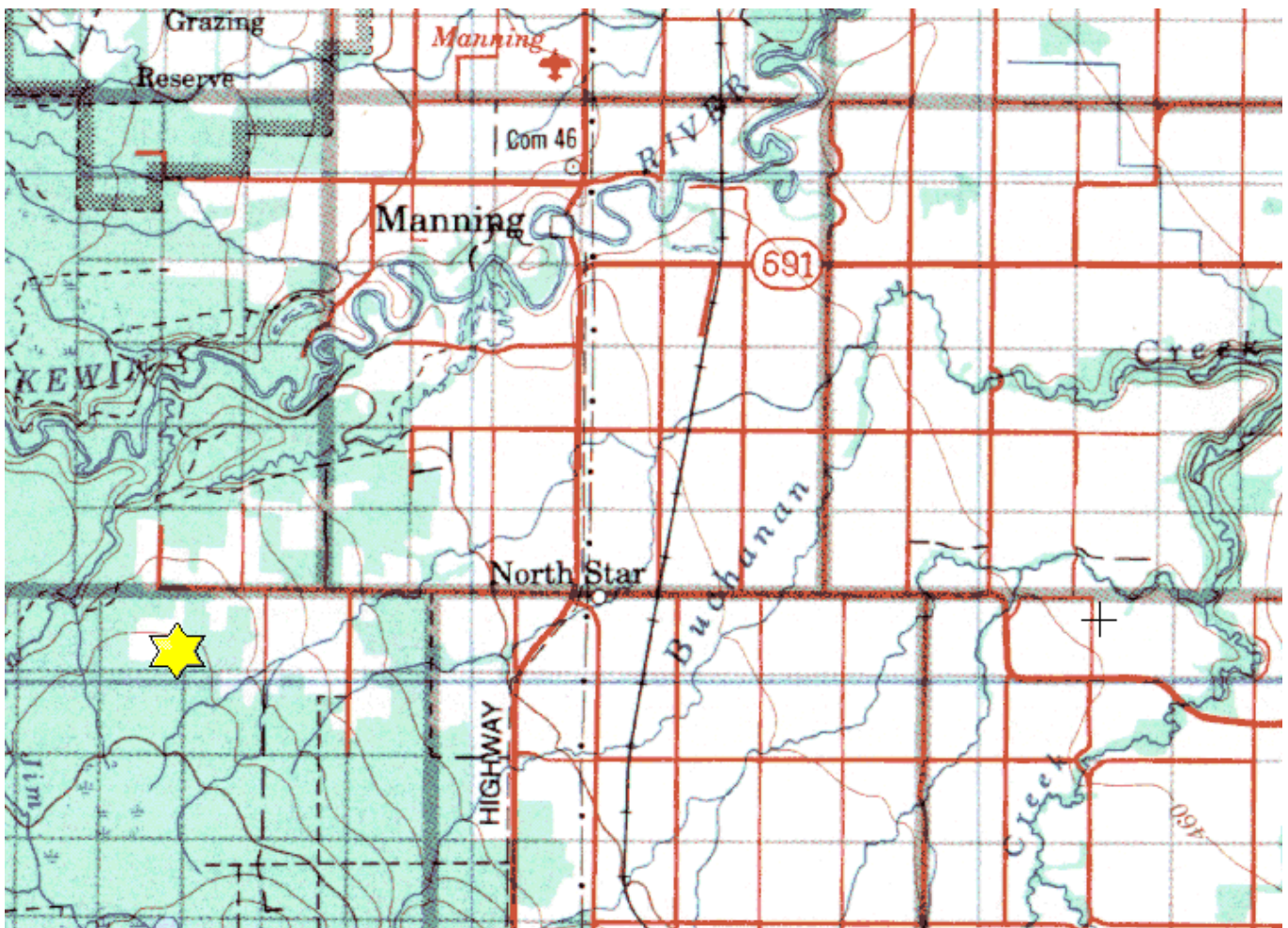
Manning Property

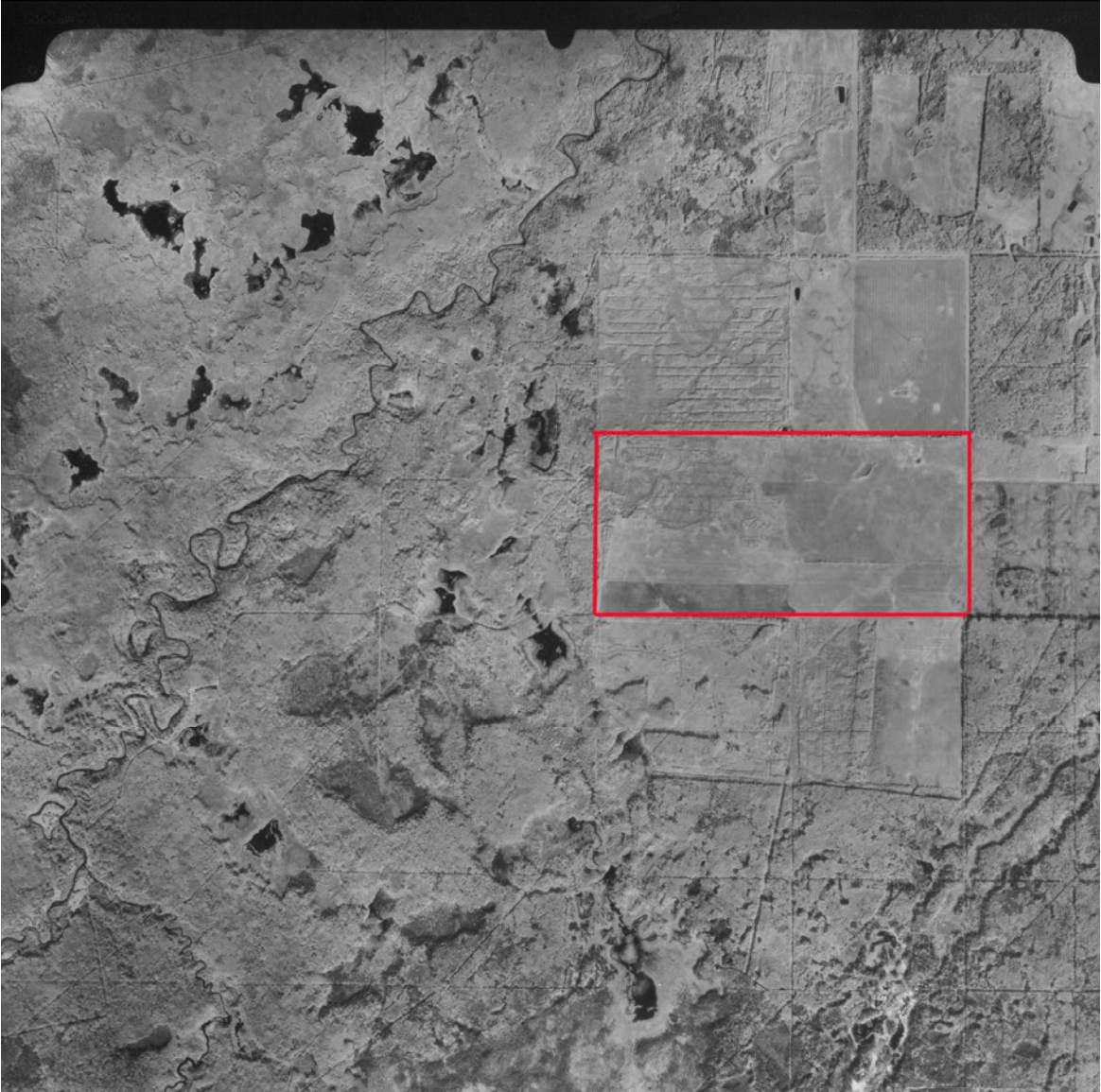
S-1/2-33-90-24-W5

Description: This 320 acre property is managed as elk winter forage to reduce depredation in the area. There are elk, mule deer, white-tailed deer and black bear that visit the property. The land is tame forage managed as a winter food source for ungulates.

Partners: ASRPWF, Rocky Mountain Elk Foundation

Special Restrictions: Day use only. No open fires. Foot access only.





Alberta Fish & Game Association, 6924 - 104street, Edmonton Alberta, T6H 2L7

Phone: 780-437-2342, Fax: 780-438-6872

Email: Office@afga.org

Website: www.afga.org