



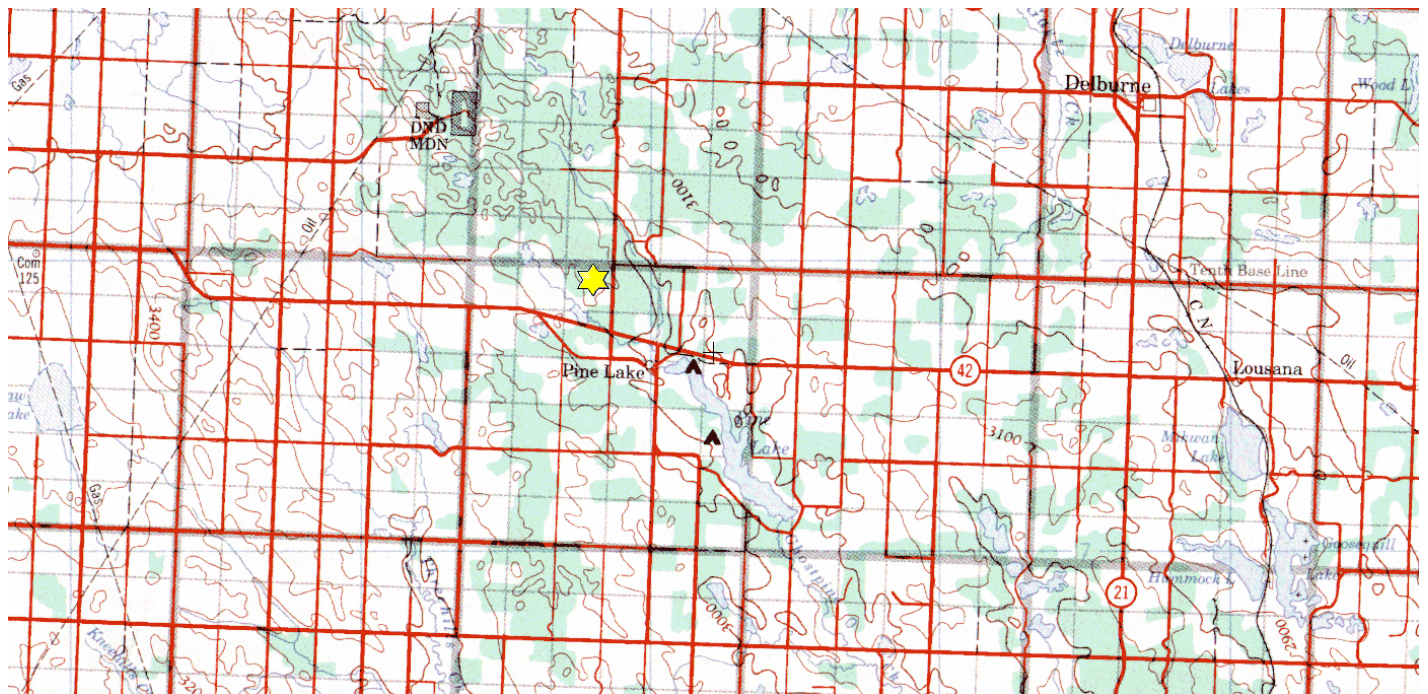
Lockerby

NW/NE-33-036-25-W4M

Description: This 319 acre site is located approximately 5 km northwest of Pine Lake and lies directly across Highway 816 from the north end of the Stonhouse Conservation Site. Habitat at the site consists of a mixture of native aspen parkland vegetation and old hayfields, with an incredible abundance of wetlands. Wildlife found here includes white-tailed deer, moose, elk, waterfowl, ruffed grouse, coyotes, furbearers, small mammals and a variety of songbirds. Berry pickers will find particularly good opportunities to harvest saskatoon berries and chokecherries, and some cranberries as well.

Partners: Alberta Conservation Association, Alberta Fish and Game, Ducks Unlimited Canada, Nature Conservancy Canada, Wildlife Habitat Canada

Special Restrictions: Day use only. No open fires. Foot access only.





Alberta Fish & Game Association, 6924 – 104 Street, Edmonton Alberta, T6H 2L7

Phone: 780-437-2342, Fax: 780-438-6872

Email: Office@afga.org

Website: www.afga.org