



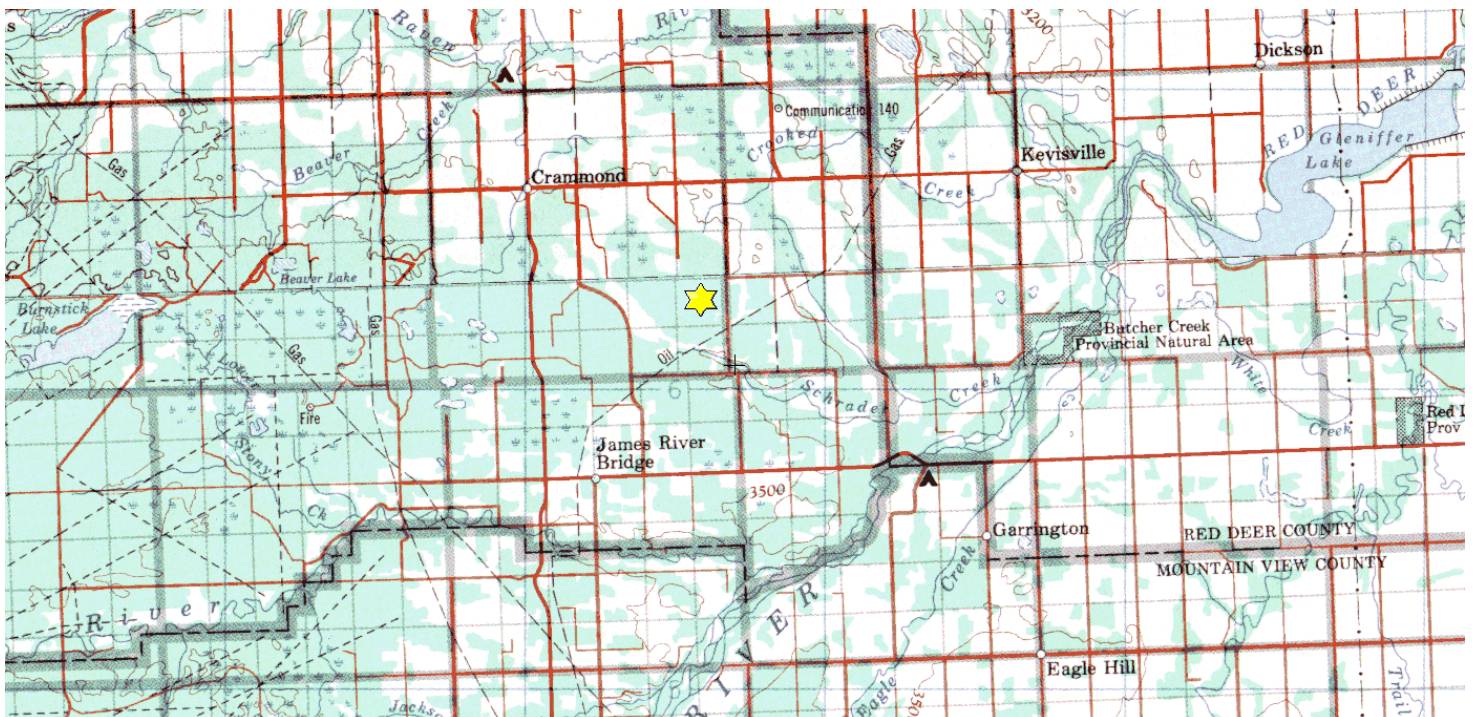
Larches

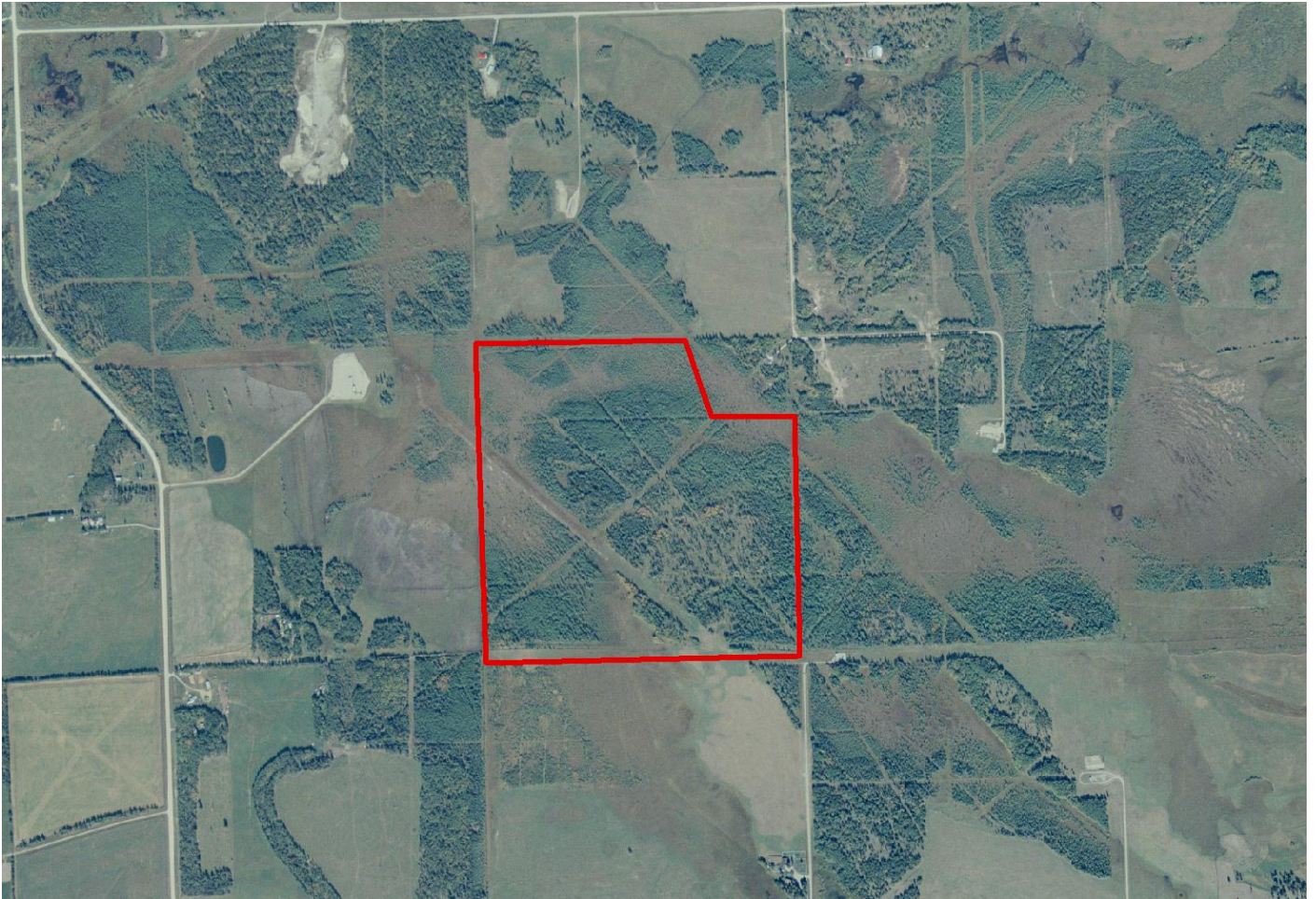
SE-35-034-05-W5M

Description: This 148 acre site is located 19 km north of Sundre near the James River. To access this site, travel north on RR 5-1, park your vehicle off the road allowance, and then travel on foot across the pipeline right-of-way to the site's southeast corner. The site has excellent ungulate habitat with a diversity of forested and wet boggy habitats. It consists mostly of native white spruce, tamarack and bog birch, with a thick mossy ground cover. Open areas are covered with grasses and native flowering forbs and shrubs. In the mixed forest, aspen, poplar and white spruce can be found, and lodgepole pines are interspersed in the drier parts of the forested area. Several cutlines occur on the site, mostly in wetter areas, and are in varying stages of regeneration with sedge species, bog birch, willow species and young tamarack. Cattails occur in the wetter bog areas. Wildlife species such as moose and deer can be found at the site, as well as game bird species such as grouse. There is also potential to find rarer species, such as Canadian toads.

Partners: Alberta Conservation Association, Alberta Fish & Game Association, Western Sky Land Trust Society

Special Restrictions: Day use only. No open fires. Foot access only.





Alberta Fish & Game Association, 6924 – 104 Street, Edmonton Alberta, T6H 2L7
Phone: 780-437-2342, Fax: 780-438-6872
Email: Office@afga.org
Website: www.afga.org