



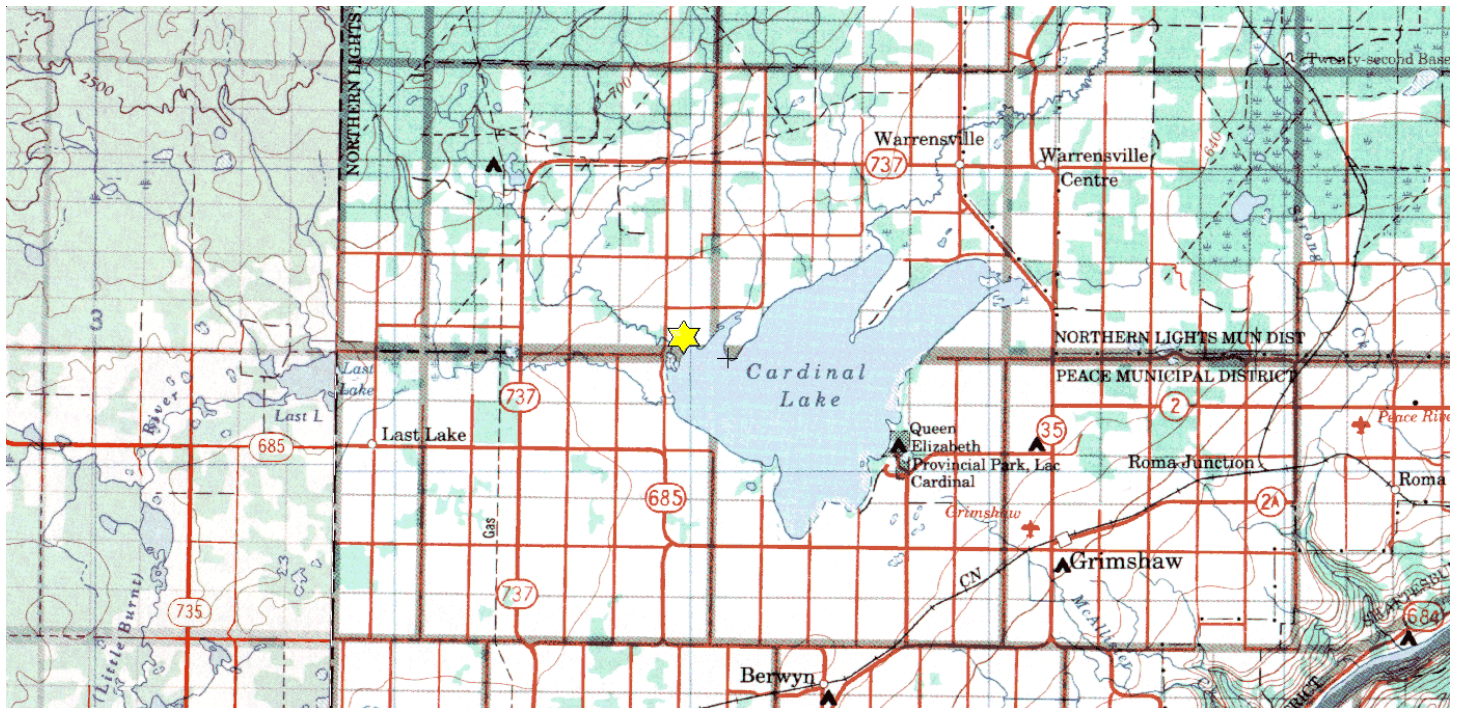
Lac Cardinal West

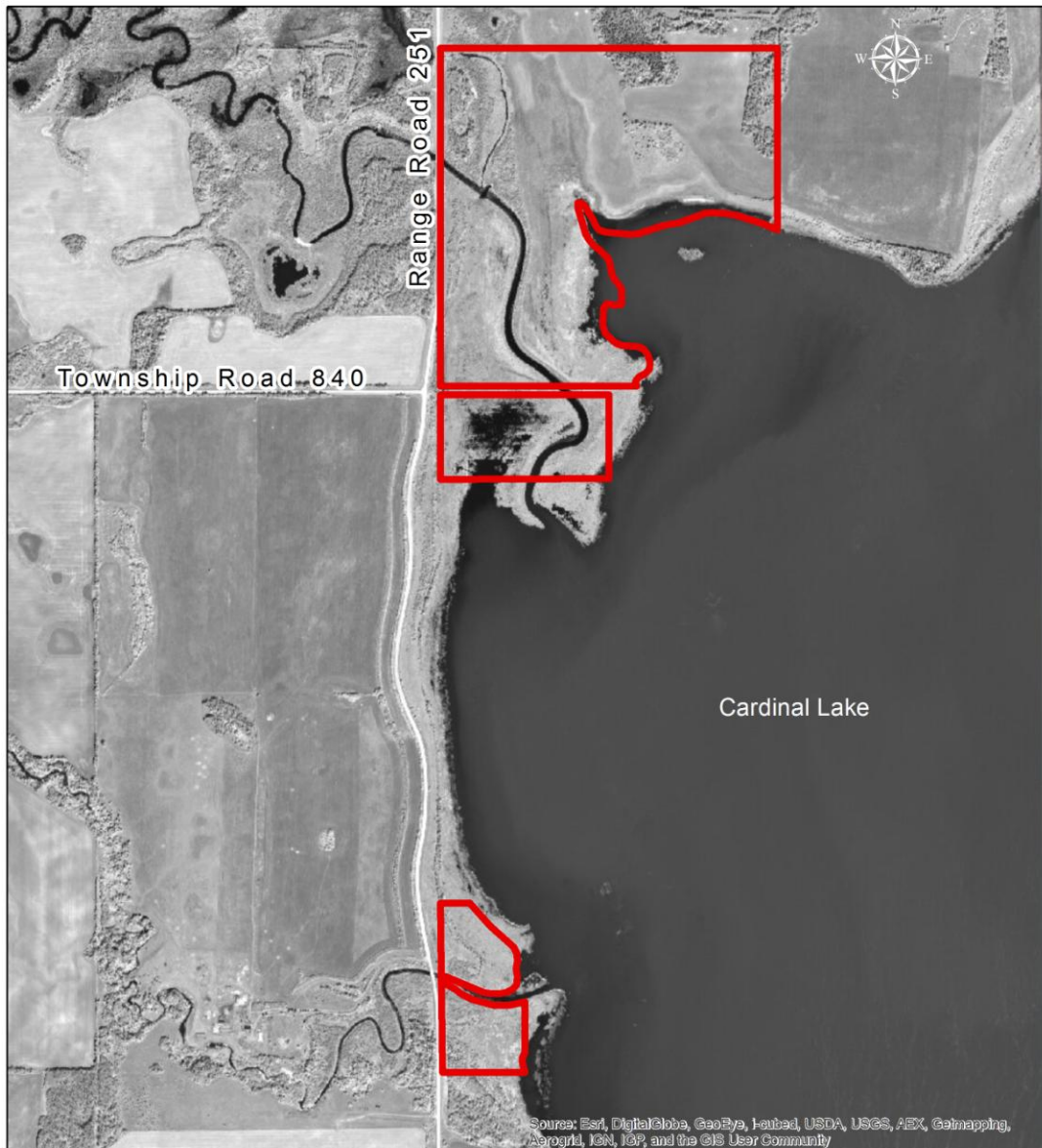
Pt. NW/SW-36-083-25-W5M, SW-01-084-25-W5M

Description: This approximately 170 acre site is located 20 km northwest of the town of Grimshaw and can be accessed via Highway 685 and RR 25-1. Mostly flat, the site consists of a mosaic of wetlands, hayland and boreal mixedwood forest. Lac Cardinal is directly adjacent on the southeast side. Abundant waterfowl, moose, elk, black bear, mule and white-tailed deer, and upland game birds can be spotted here. Hunting, hiking and wildlife-viewing opportunities are excellent.

Partners: Alberta Conservation Association, Alberta Fish & Game Association, Suncor Energy Foundation

Special Restrictions: Day use only. No open fires. Foot access only.





Lac Cardinal West Conservation Site
(Pt. NW/SW-36-083-25-W5M, SW-01-084-25-W5M)

 Lac Cardinal West Conservation Site

790 395 0 790 Meters



Alberta Fish & Game Association, 6924 – 104 Street, Edmonton Alberta, T6H 2L7
Phone: 780-437-2342, Fax: 780-438-6872
Email: Office@afga.org
Website: www.afga.org