

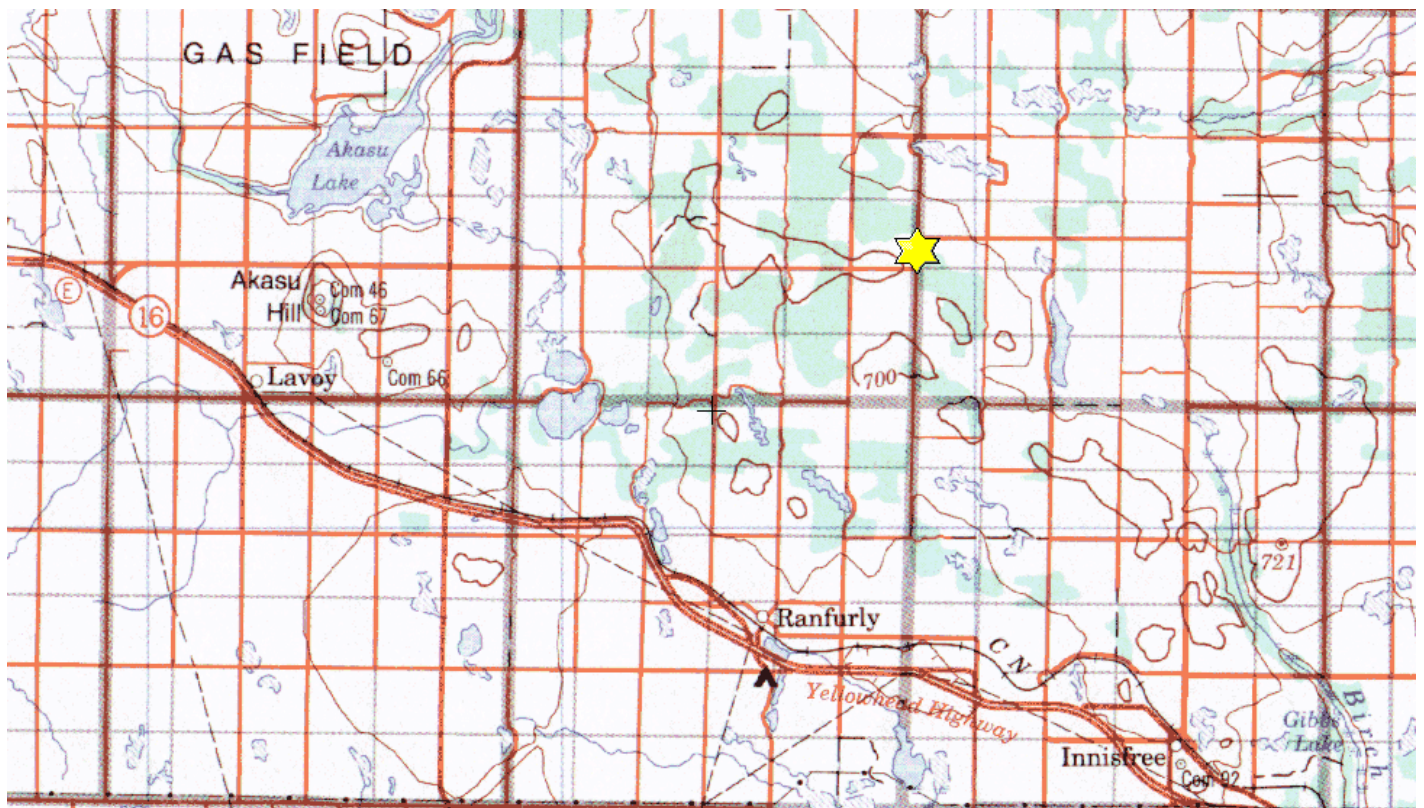


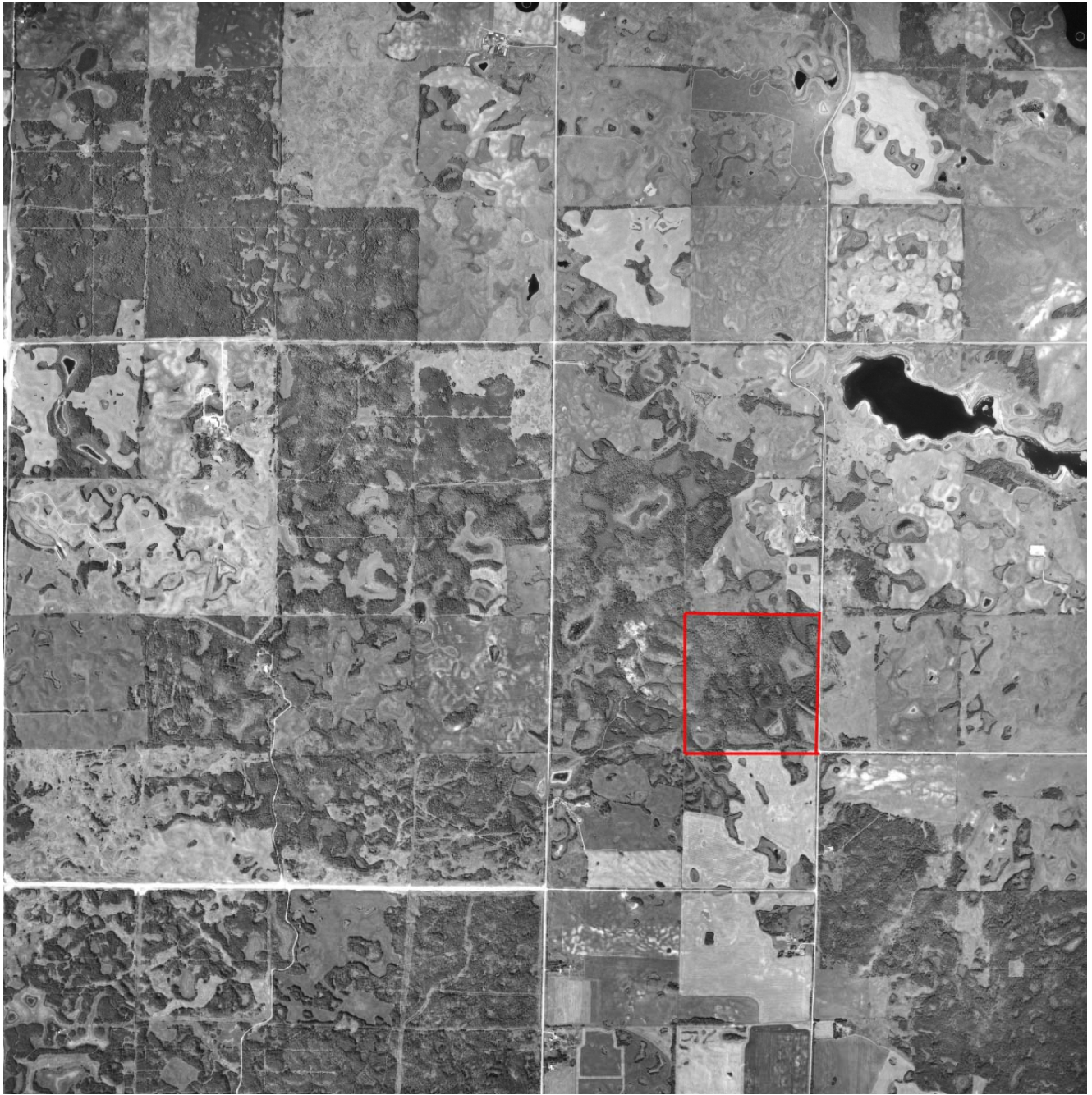
Flathead Property NE 13-52-12-W4

Description: This 160 acre property is comprised of critical native parkland habitat and contains a number of wetlands. It is home to white-tailed deer, mule deer, ruffed grouse, waterfowl and a large variety of songbirds and raptors.

Partners: Ducks Unlimited Canada, St Paul Fish & Game, Alberta Fish and Game Association

Special Restrictions: Day use only. No open fires. Foot access only.





Alberta Fish & Game Association, 6924 – 104 Street, Edmonton Alberta, T6H 2L7

Phone: 780-437-2342, Fax: 780-438-6872

Email: Office@afga.org

Website: www.afga.org