



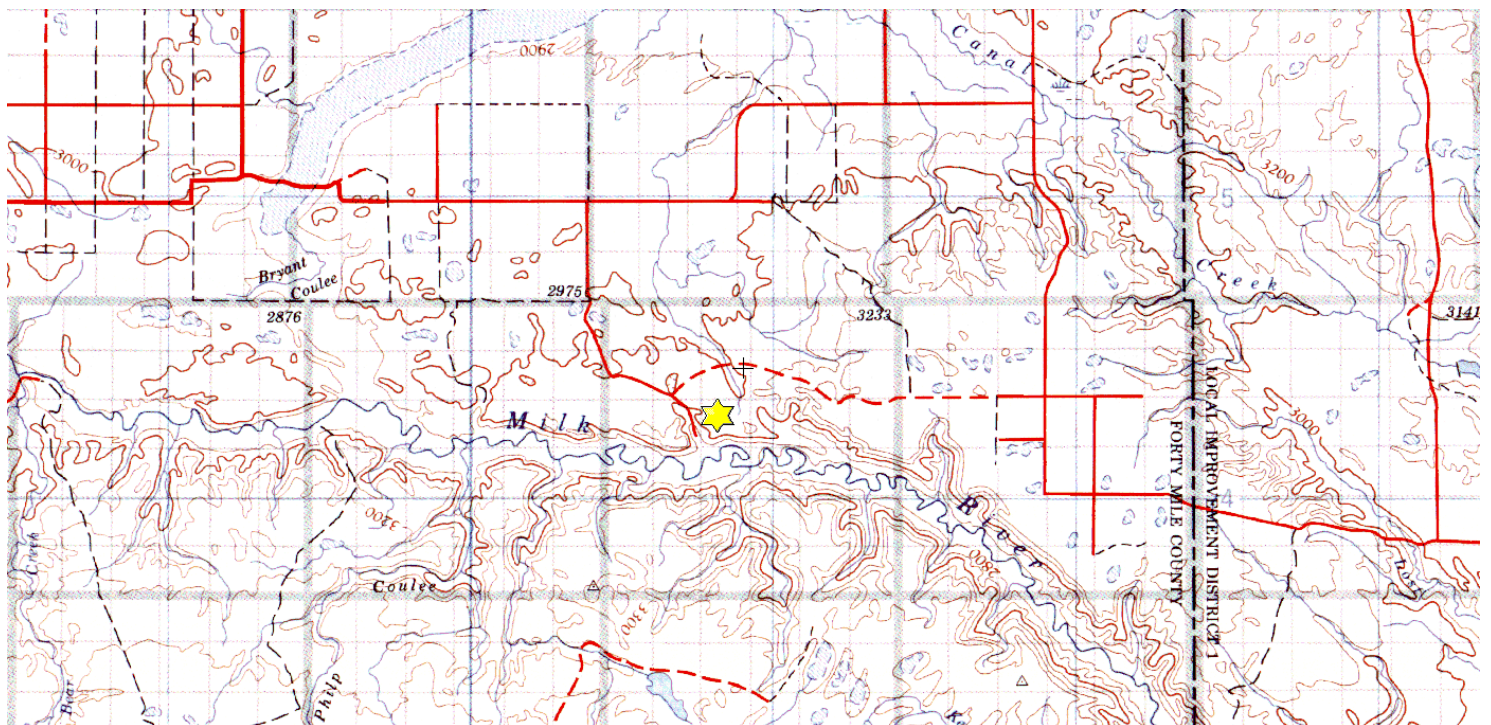
Escape Coulee

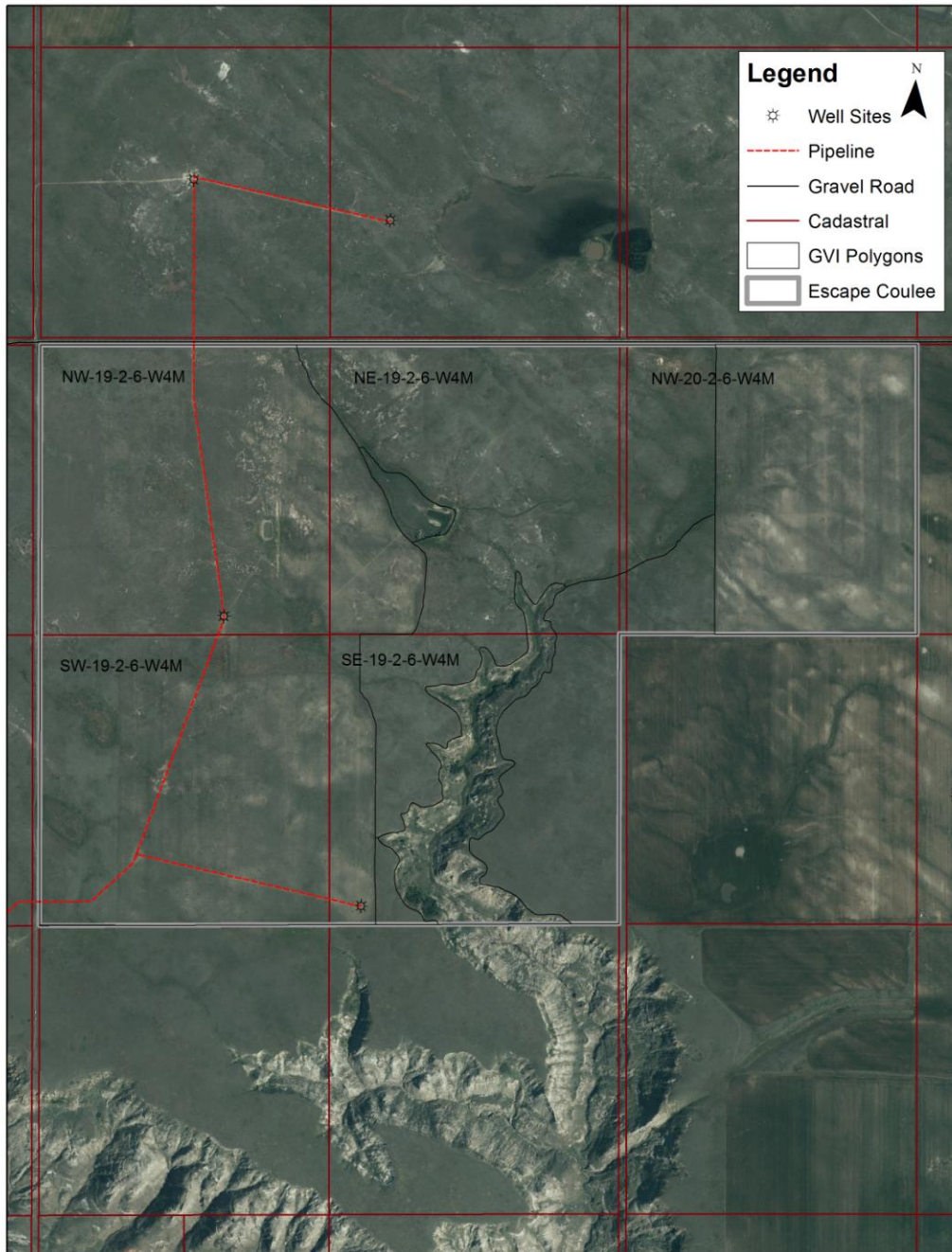
NW/NE/SW/SE-19-002-06-W4M, NW-20-002-06-W4M

Description: This 800 acre site is located approximately 94 km south of Medicine Hat and about 14 km north of the U.S. border. Situated on the edge of badland complexes along the Milk River, the site offers some unique landscape-viewing opportunities as well as ecologically sensitive native grassland habitats for sensitive and at risk species, particularly greater sage-grouse and Sprague's pipit. Recreational hunting opportunities are also available for mule deer, pronghorn and elk, as well as sharp-tailed grouse and waterfowl.

Partners: Alberta Conservation Association, Alberta Fish & Game Association, Government of Canada – Habitat Stewardship Program for Species at Risk, Pheasants Forever – Chinook Chapter, TransCanada Pipelines Ltd., Wild Elk Federation

Special Restrictions: Day use only. No open fires. Foot access only.





Alberta Fish & Game Association, 6924 – 104 Street, Edmonton Alberta, T6H 2L7
Phone: 780-437-2342, Fax: 780-438-6872
Email: Office@afga.org
Website: www.afga.org