



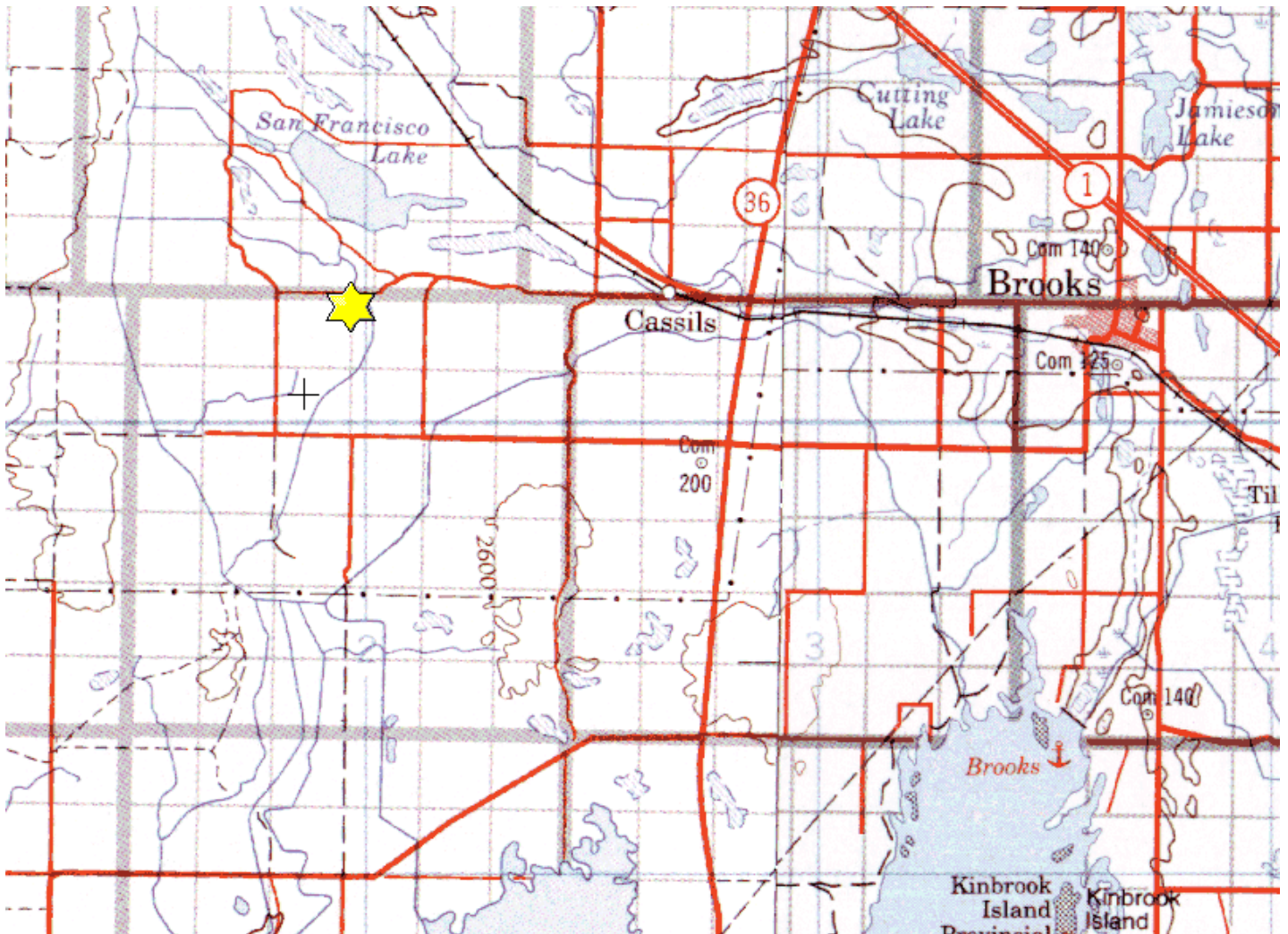
# Cassills Marsh

N-1/2-1-19-16-W4, SW-12-19-16-W4,  
S-1/2-11-19-16-W4, NE-2-19-16-W4,  
NW-6-19-15-W4

**Description:** This 616 acre property is managed in conjunction with the Antelope Creek ranch, with significant native prairie values. The large prairie wetlands are very productive and support a wide diversity of waterfowl. There are some deer and the potential for antelope. Pheasants and Hungarian partridge are present.

**Partners:** Ducks Unlimited, Fish and Wildlife

**Special Restrictions:** Day use only. No open fires. Foot access only except on designated roads.





Alberta Fish & Game Association, 6924 - 104street, Edmonton Alberta, T6H 2L7  
Phone: 780-437-2342, Fax: 780-438-6872  
Email: [Office@afga.org](mailto:Office@afga.org)  
Website: [www.afga.org](http://www.afga.org)