



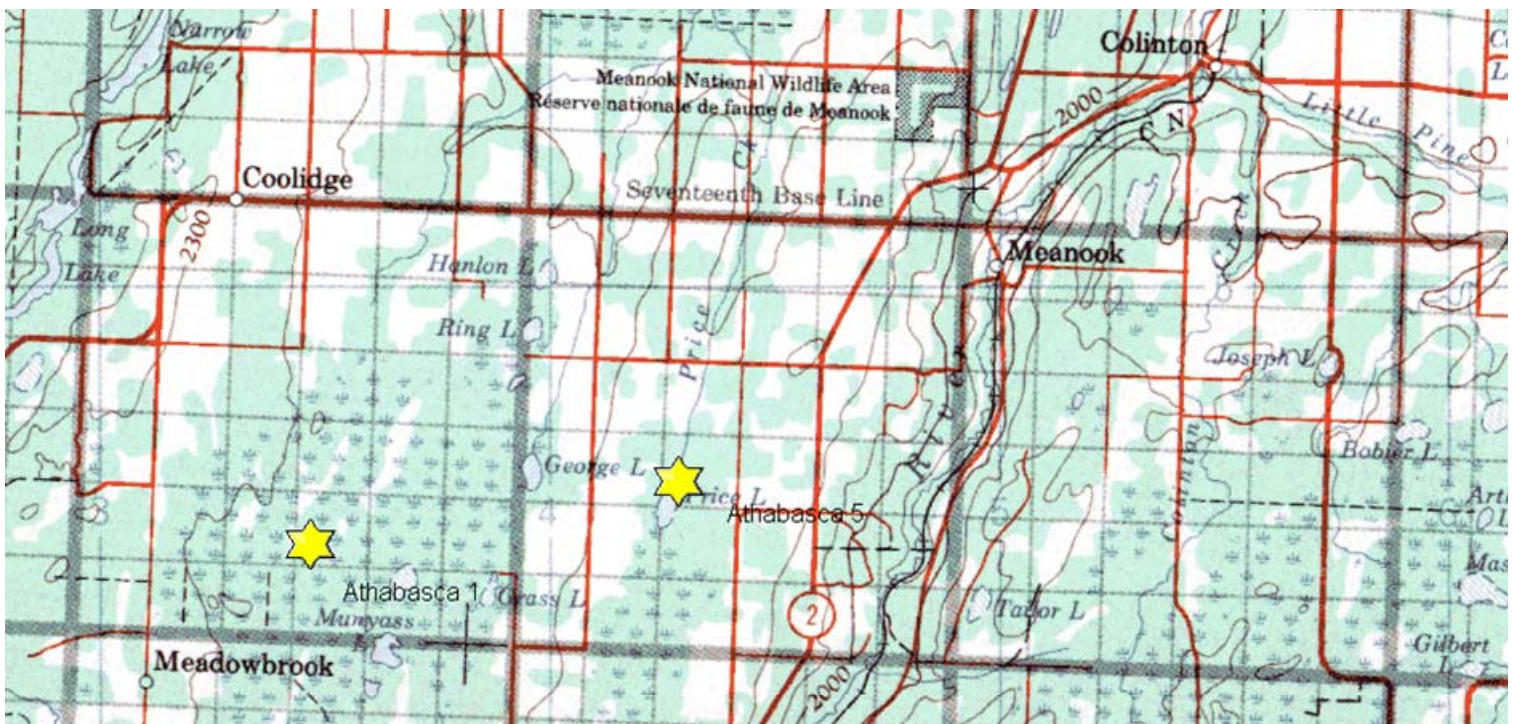
# Athabasca Properties

SW-10-64-24-W4M, SW-03-67-20-W4M, SE-01-67-21-W4M, NW-07-67-20-W4M, SW-16-64-23-W4M, NE-22-65-18-W4M, SE-12-65-18-W4M

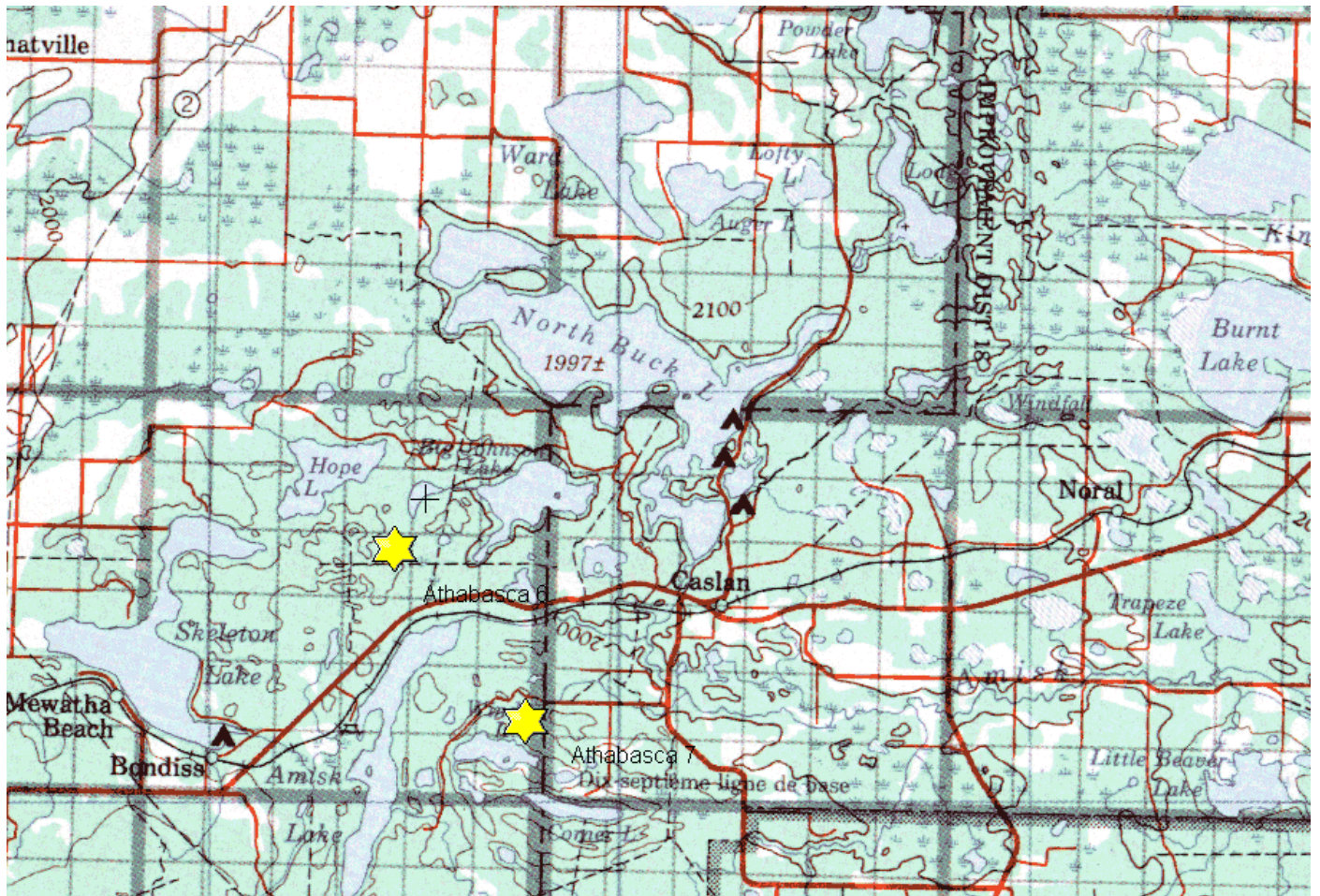
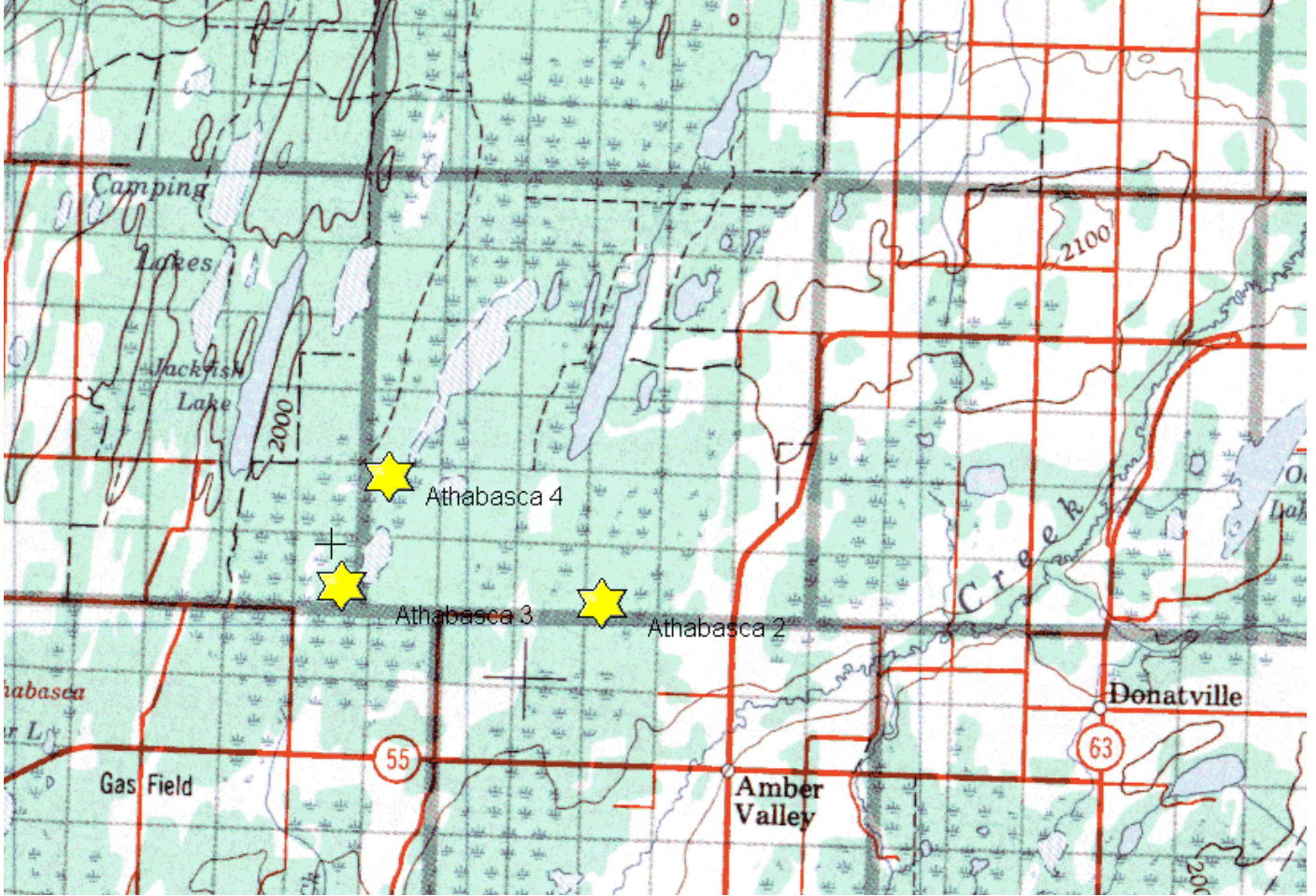
**Description:** These seven quarter sections consist primarily of forested areas comprised of trembling aspen, balsam poplar, tamarack, white and black spruce and paper birch. The small areas that aren't treed consist of small water bodies and channels, willow flats and peatlands. Common wildlife found on the properties includes white-tailed deer, moose, wolf, beaver, black bear, lynx, hare and a variety of other small game and bird species. Opportunities to hunt upland game birds and big game on the properties abound.

**Partners:** NE Alberta, Sherwood Park, Morinville, Athabasca and Fort Saskatchewan F&G, ASRPWF

**Special Restrictions:** Day use only. No open fires. Foot access only with the exception of OHV use on established trails.



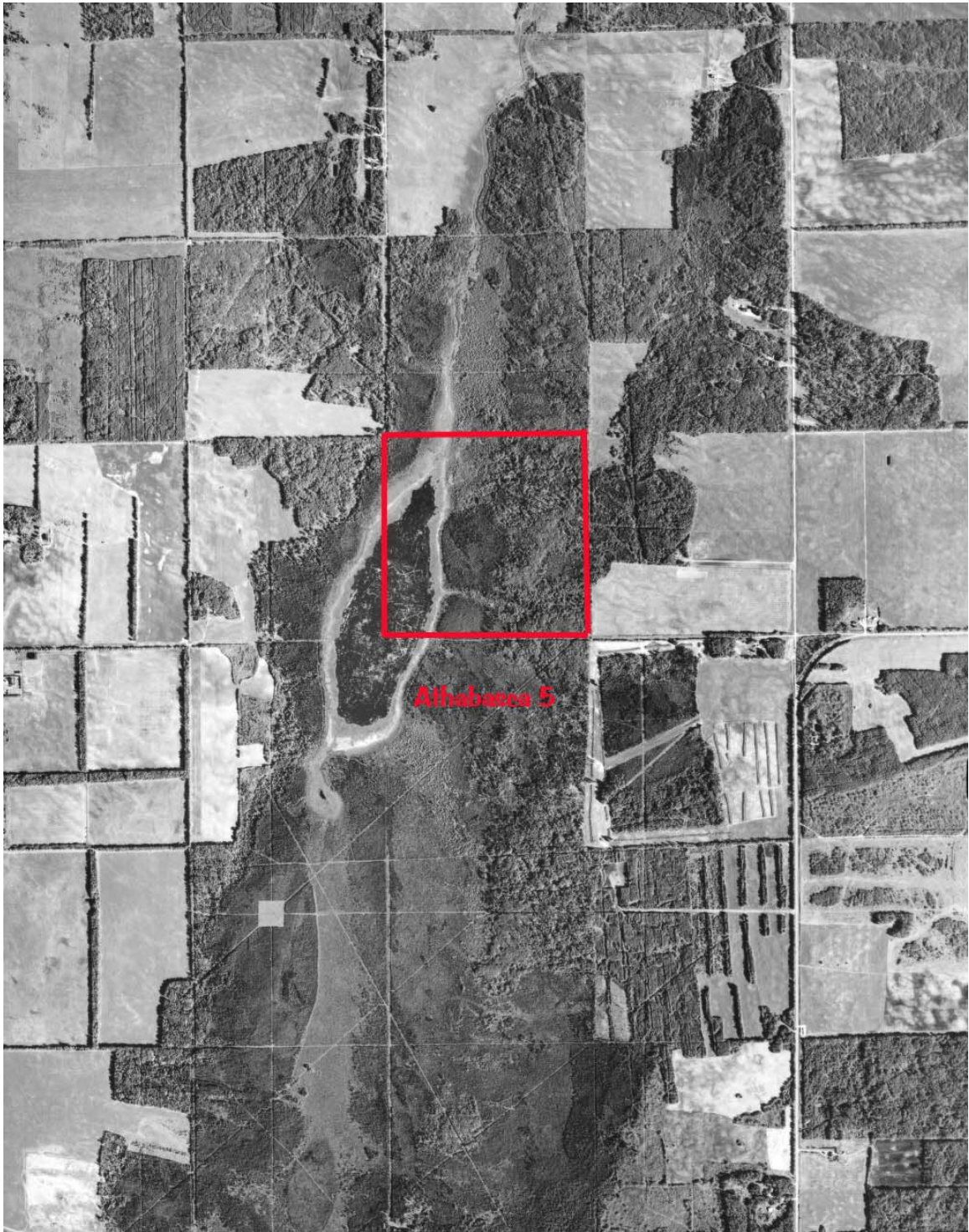




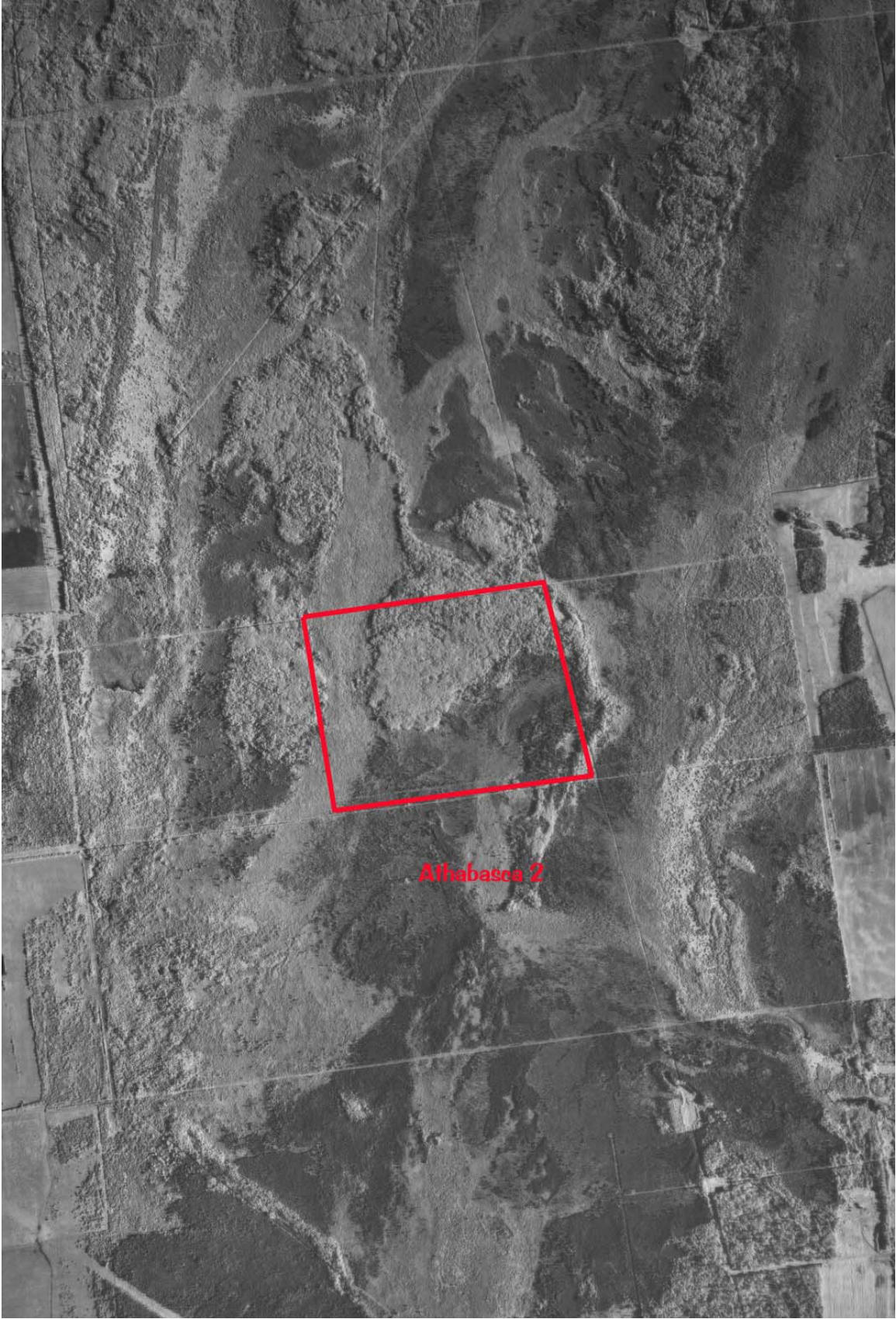












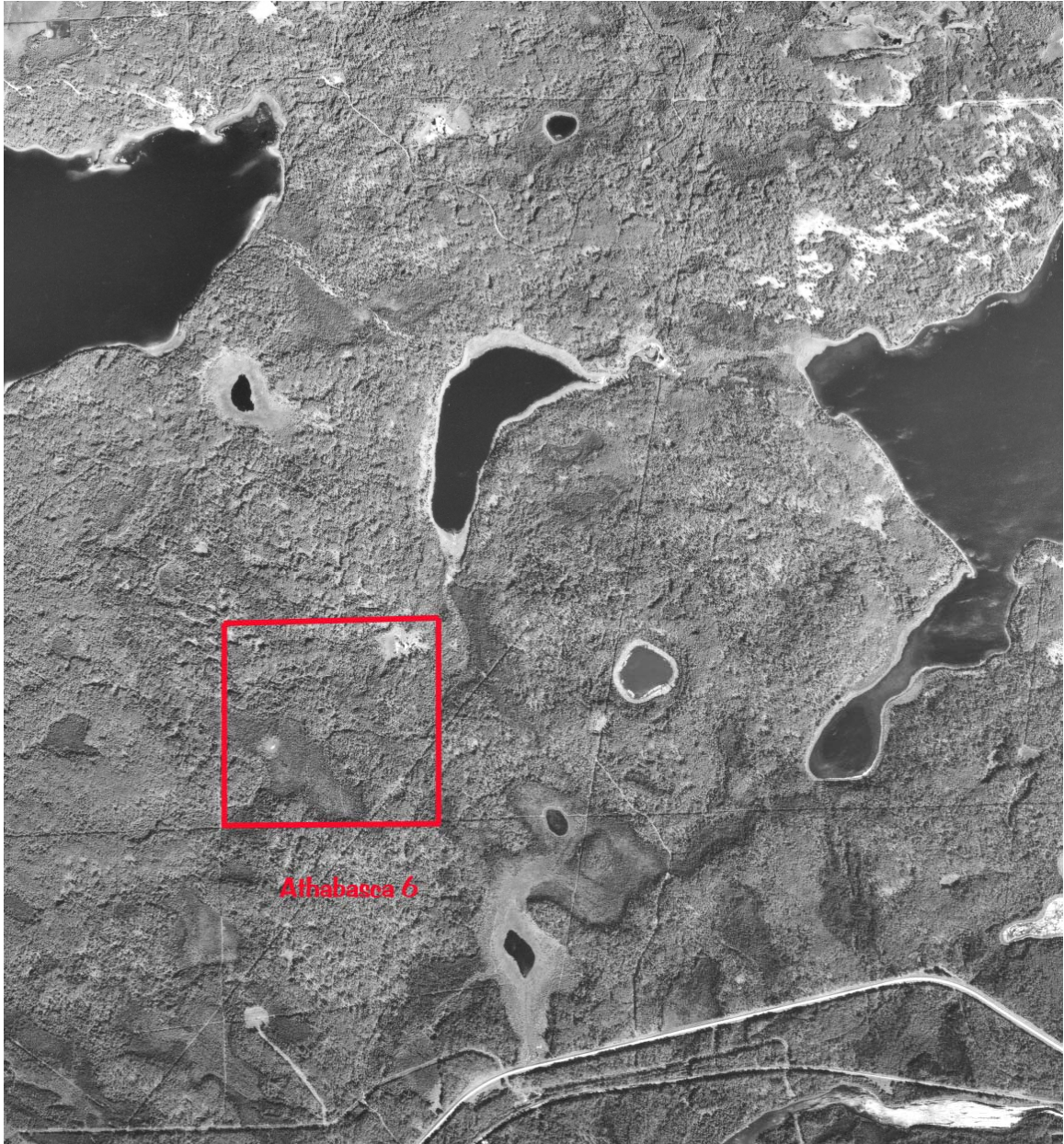
Aihabasca 2



Alhabaca 4

Alhabaca 3





**Alhabasca 6**





Alberta Fish & Game Association, 6924 - 104street, Edmonton Alberta, T6H 2L7  
Phone: 780-437-2342, Fax: 780-438-6872  
Email: [Office@afga.org](mailto:Office@afga.org)  
Website: [www.afga.org](http://www.afga.org)