



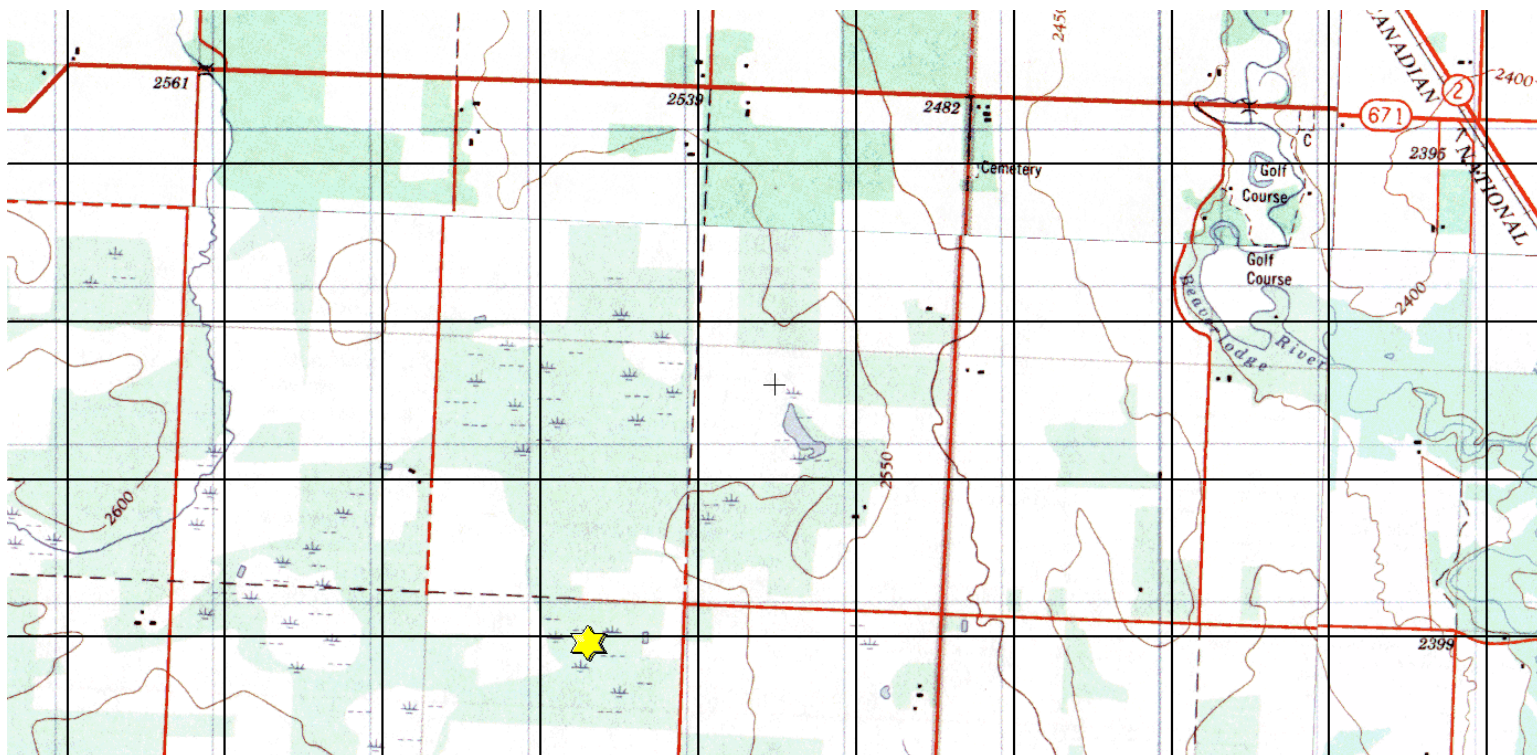
Albright 2

NE-10-072-11-W6M

Description: This 150-acre site is located approximately 14 km west of Beaverlodge via Secondary Highway 671 and Range Road 112. It consists of trembling aspen dominated forest as well as patches of black spruce bog. Moose, white-tailed deer, black bear, elk, small furbearers and ruffed grouse can be found in the area.

Partners: Alberta Alberta Conservation Association, Suncor Energy Foundation, Alberta Fish and Game Association

Special Restrictions: Day use only. No open fires. No target shooting. Foot access only.





**Albright 2 Conservation Site
(NE 10-072-11-W6)**

 Albright 2 Conservation Site



Alberta Fish & Game Association, 6924 – 104 Street, Edmonton Alberta, T6H 2L7
Phone: 780-437-2342, Fax: 780-438-6872
Email: Office@afga.org
Website: www.afga.org